

Amylin antibody [R10/99]

Cat. No. GTX11022

Host	Mouse
Clonality	Monoclonal
Isotype	IgG1
Applications	ICC/IF, IHC-P, IHC-Fr
Reactivity	Human, Mouse

References (3)

Package

1 ml

Applications

Application Note

*Optimal dilutions/concentrations should be determined by the researcher.

Suggested dilution	Recommended dilution
ICC/IF	Assay dependent
IHC-P	1/100
IHC-Fr	1/100

Note : This product does not require protein digestion pre-treatment of paraffin sections.

Not tested in other applications.

Product Note This antibody recognizes the islet amyloid polypeptide (amylin).

Properties

Form	Liquid
Buffer	Tissue culture supernatant
Preservative	0.09% Sodium azide
Storage	Store as concentrated solution. Centrifuge briefly prior to opening vial. For short-term storage (1-2 weeks), store at 4°C. For long-term storage, aliquot and store at -20°C or below. Avoid multiple freeze-thaw cycles.
Immunogen	A peptide CATQLANFLV corresponding to residues 40-50 of human amylin coupled to tuberculin
Purification	Tissue Culture Supernatant
Conjugation	Unconjugated

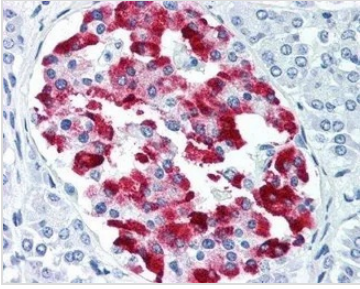
Note

For laboratory research use only. Not for any clinical, therapeutic, or diagnostic use in humans or animals. Not for animal or human consumption.

Purchasers shall not, and agree not to enable third parties to, analyze, copy, reverse engineer or otherwise attempt to determine the structure or sequence of the product.

For full product information, images and publications, please visit our [website](#).

DATA IMAGES

**GTX11022 IHC-P Image**

IHC-P analysis of human pancreas tissue using GTX11022 Amylin antibody [R10/99].



For full product information, images and publications, please visit our [website](#).