

## PAPSS2 antibody [C1C3]

Cat. No. GTX110232

<b>Host</b>	Rabbit
<b>Clonality</b>	Polyclonal
<b>Isotype</b>	IgG
<b>Applications</b>	WB, ICC/IF, IHC-P
<b>Reactivity</b>	Human, Rat

**Package**  
100 µl, 25 µl

## Applications

**Application Note**

\*Optimal dilutions/concentrations should be determined by the researcher.

Suggested dilution	Recommended dilution
WB	1:500-1:3000
ICC/IF	1:100-1:1000
IHC-P	1:100-1:1000

Not tested in other applications.

**Calculated MW** 70 kDa. ([Note](#))

## Properties

<b>Form</b>	Liquid
<b>Buffer</b>	0.1M Tris, 0.1M Glycine, 10% Glycerol
<b>Preservative</b>	0.01% Thimerosal
<b>Storage</b>	Store as concentrated solution. Centrifuge briefly prior to opening vial. For short-term storage (1-2 weeks), store at 4°C. For long-term storage, aliquot and store at -20°C or below. Avoid multiple freeze-thaw cycles.
<b>Concentration</b>	1 mg/ml (Please refer to the vial label for the specific concentration.)
<b>Immunogen</b>	Recombinant protein encompassing a sequence within the center region of human PAPSS2. The exact sequence is proprietary.
<b>Purification</b>	Purified by antigen-affinity chromatography.
<b>Conjugation</b>	Unconjugated

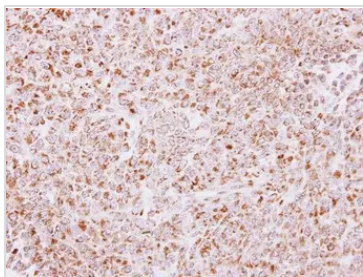
**Note** For laboratory research use only. Not for any clinical, therapeutic, or diagnostic use in humans or animals. Not for animal or human consumption.

Purchasers shall not, and agree not to enable third parties to, analyze, copy, reverse engineer or otherwise attempt to determine the structure or sequence of the product.



For full product information, images and publications, please visit our [website](#).

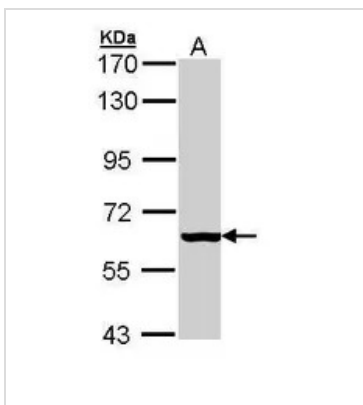
DATA IMAGES



**GTX110232 IHC-P Image**

Immunohistochemical analysis of paraffin-embedded H3347 xenograft, using PAPSS2(GTX110232) antibody at 1:500 dilution.

Antigen Retrieval: Citrate buffer, pH 6.0, 15 min



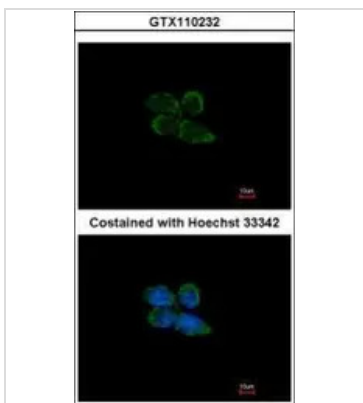
**GTX110232 WB Image**

Sample (30 ug of whole cell lysate)

A: H1299

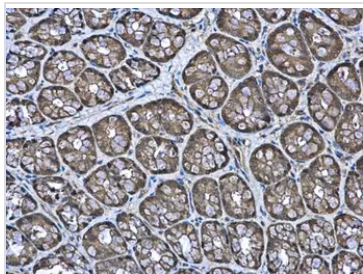
7.5% SDS PAGE

GTX110232 diluted at 1:1000



**GTX110232 ICC/IF Image**

Immunofluorescence analysis of paraformaldehyde-fixed A431, using PAPSS2(GTX110232) antibody at 1:200 dilution.



**GTX110232 IHC-P Image**

PAPSS2 antibody [C1C3] detects PAPSS2 protein at cytoplasm in rat colon by immunohistochemical analysis.

Sample: Paraffin-embedded rat colon.

PAPSS2 antibody [C1C3] (GTX110232) diluted at 1:500.

Antigen Retrieval: Citrate buffer, pH 6.0, 15 min



For full product information, images and publications, please visit our [website](#).