

MX1 antibody [N2C2], Internal

Cat. No. GTX110256

Host	Rabbit
Clonality	Polyclonal
Isotype	IgG
Applications	WB, ICC/IF, IHC-P, IHC-Fr
Reactivity	Human, Rabbit, Bovine, Monkey

References (23)

Package

100 µl, 25 µl

Applications

Application Note

*Optimal dilutions/concentrations should be determined by the researcher.

Suggested dilution	Recommended dilution
WB	1:500-1:3000
ICC/IF	1:100-1:1000
IHC-P	1:100-1:1000
IHC-Fr	Assay dependent

Not tested in other applications.

Calculated MW 76 kDa. ([Note](#))

Properties

Form	Liquid
Buffer	PBS, 20% Glycerol
Preservative	0.025% ProClin 300
Storage	Store as concentrated solution. Centrifuge briefly prior to opening vial. For short-term storage (1-2 weeks), store at 4°C. For long-term storage, aliquot and store at -20°C or below. Avoid multiple freeze-thaw cycles.
Concentration	1.23 mg/ml (Please refer to the vial label for the specific concentration.)
Immunogen	Recombinant protein encompassing a sequence within the center region of human MX1. The exact sequence is proprietary.
Purification	Purified by antigen-affinity chromatography.
Conjugation	Unconjugated

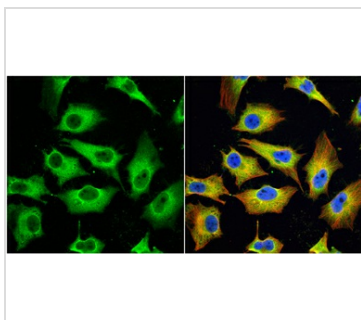
Note

For laboratory research use only. Not for any clinical, therapeutic, or diagnostic use in humans or animals. Not for animal or human consumption.

Purchasers shall not, and agree not to enable third parties to, analyze, copy, reverse engineer or otherwise attempt to determine the structure or sequence of the product.

For full product information, images and publications, please visit our [website](#).

DATA IMAGES

**GTX110256 ICC/IF Image**

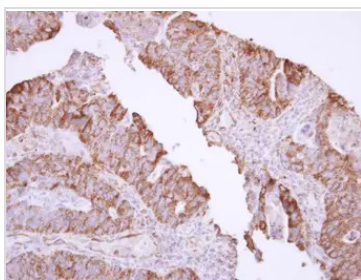
MX1 antibody [N2C2], Internal detects MX1 protein at cytoplasm by immunofluorescent analysis.

Sample: HeLa cells were fixed in 4% paraformaldehyde at RT for 15 min.

Green: MX1 protein stained by MX1 antibody [N2C2], Internal (GTX110256) diluted at 1:200.

Red: alpha Tubulin, a cytoskeleton marker, stained by alpha Tubulin antibody [GT114] (GTX628802) diluted at 1:1000.

Blue: Hoechst 33342 staining.

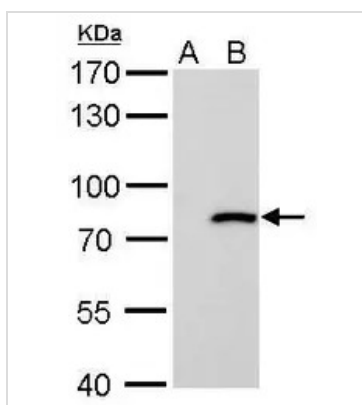
**GTX110256 IHC-P Image**

MX1 antibody [N2C2], Internal detects MX1 protein at cytoplasm in human colon carcinoma by immunohistochemical analysis.

Sample: Paraffin-embedded human colon carcinoma.

MX1 antibody [N2C2], Internal (GTX110256) diluted at 1:500.

Antigen Retrieval: Citrate buffer, pH 6.0, 15 min

**GTX110256 WB Image**

MX1 antibody [N2C2], Internal detects MX1 protein by western blot analysis.

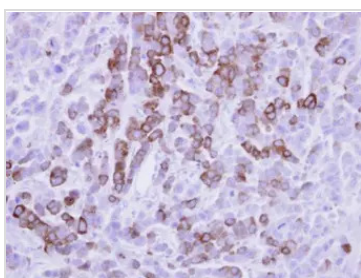
A. 30 µg 293T whole cell lysate/extract

B. 30 µg whole cell lysate/extract of human MX1-transfected 293T cells.

7.5% SDS-PAGE

MX1 antibody [N2C2], Internal (GTX110256) dilution: 1:10000

The HRP-conjugated anti-rabbit IgG antibody (GTX213110-01) was used to detect the primary antibody.

**GTX110256 IHC-P Image**

Immunohistochemical analysis of paraffin-embedded MDA-MB-468 xenograft, using MX1(GTX110256) antibody at 1:500 dilution.

Antigen Retrieval: Citrate buffer, pH 6.0, 15 min



For full product information, images and publications, please visit our [website](#).