

Glycine dehydrogenase antibody [N3C2-2], Internal

Cat. No. GTX110267

Host	Rabbit
Clonality	Polyclonal
Isotype	IgG
Applications	WB, ICC/IF, IHC-P, IP
Reactivity	Human, Mouse, Rat

Package
100 µl, 25 µl

Applications

Application Note

*Optimal dilutions/concentrations should be determined by the researcher.

Suggested dilution	Recommended dilution
WB	1:500-1:3000
ICC/IF	1:100-1:1000
IHC-P	1:100-1:1000
IP	1:100-1:500

Not tested in other applications.

Calculated MW 113 kDa. ([Note](#))

Properties

Form	Liquid
Buffer	PBS, 1% BSA, 20% Glycerol
Preservative	0.025% ProClin 300
Storage	Store as concentrated solution. Centrifuge briefly prior to opening vial. For short-term storage (1-2 weeks), store at 4°C. For long-term storage, aliquot and store at -20°C or below. Avoid multiple freeze-thaw cycles.
Concentration	0.46 mg/ml (Please refer to the vial label for the specific concentration.)
Immunogen	Recombinant protein encompassing a sequence within the center region of human Glycine dehydrogenase. The exact sequence is proprietary.
Purification	Purified by antigen-affinity chromatography.
Conjugation	Unconjugated

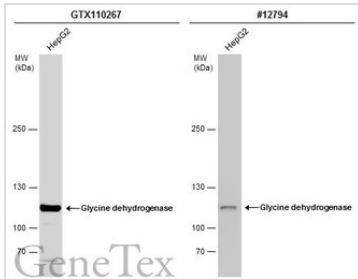


For full product information, images and publications, please visit our [website](#).

For laboratory research use only. Not for any clinical, therapeutic, or diagnostic use in humans or animals. Not for animal or human consumption.

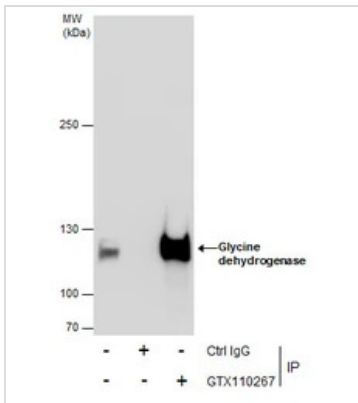
Note

Purchasers shall not, and agree not to enable third parties to, analyze, copy, reverse engineer or otherwise attempt to determine the structure or sequence of the product.

DATA IMAGES

GTX110267 WB Image

Whole cell extract (30 µg) was separated by 5% SDS-PAGE, and the membranes were blotted with Glycine dehydrogenase antibody [N3C2-2], Internal (GTX110267) diluted at 1:1000 and competitor's antibody (CST#12794) diluted at 1:1000. The HRP-conjugated anti-rabbit IgG antibody (GTX213110-01) was used to detect the primary antibody.

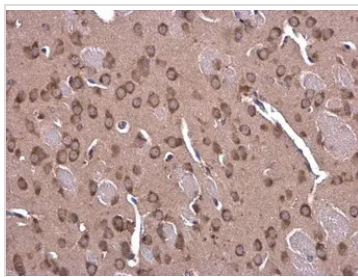
*The competitor is not affiliated with GeneTex and does not endorse this product.


GTX110267 IP Image

Immunoprecipitation of Glycine dehydrogenase protein from HepG2 whole cell extracts using 5 µg of Glycine dehydrogenase antibody [N3C2-2], Internal (GTX110267).

Western blot analysis was performed using Glycine dehydrogenase antibody [N3C2-2], Internal (GTX110267).

EasyBlot anti-Rabbit IgG (GTX221666-01) was used as a secondary reagent.

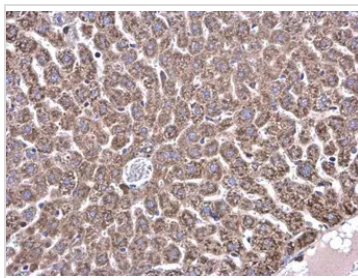

GTX110267 IHC-P Image

Glycine dehydrogenase antibody [N3C2-2], Internal detects Glycine dehydrogenase protein at cytoplasm in mouse brain by immunohistochemical analysis.

Sample: Paraffin-embedded mouse brain.

Glycine dehydrogenase antibody [N3C2-2], Internal (GTX110267) diluted at 1:500.

Antigen Retrieval: Citrate buffer, pH 6.0, 15 min


GTX110267 IHC-P Image

Glycine dehydrogenase antibody [N3C2-2], Internal detects Glycine dehydrogenase protein at mitochondria in mouse liver by immunohistochemical analysis.

Sample: Paraffin-embedded mouse liver.

Glycine dehydrogenase antibody [N3C2-2], Internal (GTX110267) diluted at 1:500.

Antigen Retrieval: Citrate buffer, pH 6.0, 15 min



For full product information, images and publications, please visit our [website](https://www.genetex.com).