

IKAP antibody [C1C2], Internal

Cat. No. GTX110274

Host	Rabbit
Clonality	Polyclonal
Isotype	IgG
Applications	WB, ICC/IF
Reactivity	Human, Mouse

References (1)

Package

100 µl, 25 µl

Applications

Application Note

*Optimal dilutions/concentrations should be determined by the researcher.

Suggested dilution	Recommended dilution
WB	1:500-1:3000
ICC/IF	1:100-1:1000

Not tested in other applications.

Calculated MW 150 kDa. ([Note](#))

Properties

Form	Liquid
Buffer	PBS, 1% BSA, 20% Glycerol
Preservative	0.01% Thimerosal
Storage	Store as concentrated solution. Centrifuge briefly prior to opening vial. For short-term storage (1-2 weeks), store at 4°C. For long-term storage, aliquot and store at -20°C or below. Avoid multiple freeze-thaw cycles.
Concentration	1 mg/ml (Please refer to the vial label for the specific concentration.)
Immunogen	Recombinant protein encompassing a sequence within the center region of human IKAP. The exact sequence is proprietary.
Purification	Purified by antigen-affinity chromatography.
Conjugation	Unconjugated

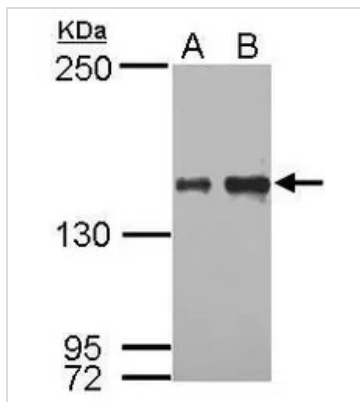
Note

For laboratory research use only. Not for any clinical, therapeutic, or diagnostic use in humans or animals. Not for animal or human consumption.

Purchasers shall not, and agree not to enable third parties to, analyze, copy, reverse engineer or otherwise attempt to determine the structure or sequence of the product.



For full product information, images and publications, please visit our [website](#).

DATA IMAGES

GTX110274 WB Image

Sample (30 µg of whole cell lysate)

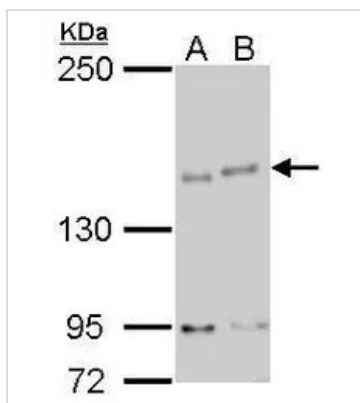
A: HeLa

B: HepG2

5% SDS-PAGE

GTX110274 diluted at 1:1000

The HRP-conjugated anti-rabbit IgG antibody (GTX213110-01) was used to detect the primary antibody.


GTX110274 WB Image

IKAP antibody [C1C2], Internal detects IKAP protein by western blot analysis.

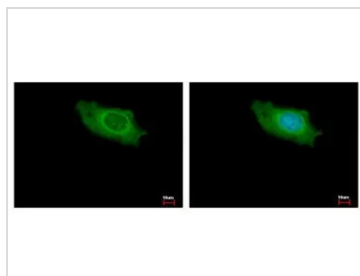
A. 30 µg GL261 whole cell lysate/extract

B. 30 µg Raw264.7 whole cell lysate/extract

5% SDS-PAGE

IKAP antibody [C1C2], Internal (GTX110274) dilution: 1:500

The HRP-conjugated anti-rabbit IgG antibody (GTX213110-01) was used to detect the primary antibody.


GTX110274 ICC/IF Image

IKAP antibody [C1C2], Internal detects IKAP protein at cytoplasm by immunofluorescent analysis.

Sample: HeLa cells were fixed in ice-cold MeOH for 5 min.

Green: IKAP protein stained by IKAP antibody [C1C2], Internal (GTX110274) diluted at 1:500.

Blue: Hoechst 33343 staining.



For full product information, images and publications, please visit our [website](https://www.genetex.com).