

Rb2 / p130 antibody

Cat. No. GTX110329

Host	Rabbit
Clonality	Polyclonal
Isotype	IgG
Applications	WB, IHC-P
Reactivity	Human, Mouse, Rat

Package
100 µl, 25 µl

Applications

Application Note

*Optimal dilutions/concentrations should be determined by the researcher.

Suggested dilution	Recommended dilution
WB	1:500-1:3000
IHC-P	1:100-1:1000

Not tested in other applications.

Calculated MW 128 kDa. ([Note](#))

Properties

Form	Liquid
Buffer	PBS, 20% Glycerol
Preservative	0.01% Thimerosal
Storage	Store as concentrated solution. Centrifuge briefly prior to opening vial. For short-term storage (1-2 weeks), store at 4°C. For long-term storage, aliquot and store at -20°C or below. Avoid multiple freeze-thaw cycles.
Concentration	1 mg/ml (Please refer to the vial label for the specific concentration.)
Immunogen	Recombinant protein encompassing a sequence within the center region of human Rb2 / p130. The exact sequence is proprietary.
Purification	Purified by antigen-affinity chromatography.
Conjugation	Unconjugated

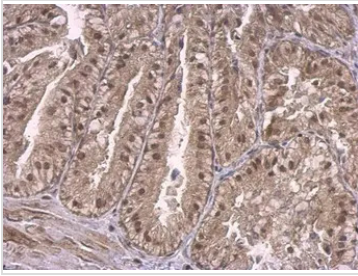
Note

For laboratory research use only. Not for any clinical, therapeutic, or diagnostic use in humans or animals. Not for animal or human consumption.

Purchasers shall not, and agree not to enable third parties to, analyze, copy, reverse engineer or otherwise attempt to determine the structure or sequence of the product.



For full product information, images and publications, please visit our [website](#).

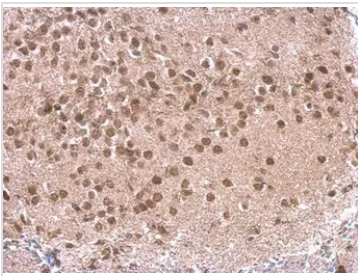
DATA IMAGES

GTX110329 IHC-P Image

p130 antibody detects p130 protein at nucleus on mouse prostate by immunohistochemical analysis.

Sample: Paraffin-embedded mouse prostate.

p130 antibody (GTX110329) dilution: 1:500.

Antigen Retrieval: Trilogy™ (EDTA based, pH 8.0) buffer, 15min

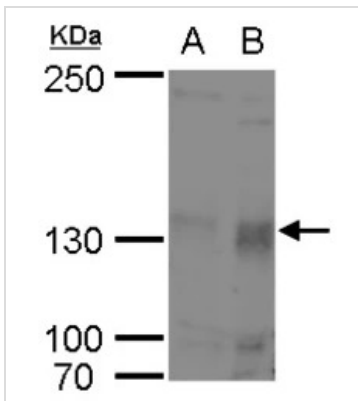

GTX110329 IHC-P Image

p130 antibody detects p130 protein at nucleus on rat fore brain by immunohistochemical analysis.

Sample: Paraffin-embedded rat fore brain.

p130 antibody (GTX110329) dilution: 1:500.

Antigen Retrieval: Trilogy™ (EDTA based, pH 8.0) buffer, 15min


GTX110329 WB Image

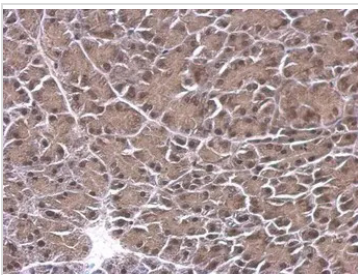
p130 antibody detects p130 protein by western blot analysis.

A. 30 µg Jurkat whole cell lysate/extract

B. 30 µg Jurkat nuclear lysate/extract

5 % SDS-PAGE

p130 antibody (GTX110329) dilution: 1:500


GTX110329 IHC-P Image

p130 antibody detects p130 protein at nucleus on mouse prostate by immunohistochemical analysis.

Sample: Paraffin-embedded mouse prostate.

p130 antibody (GTX110329) dilution: 1:500.

Antigen Retrieval: Trilogy™ (EDTA based, pH 8.0) buffer, 15min



For full product information, images and publications, please visit our [website](https://www.genetex.com).