

Aminoacylase 1 antibody [N2C3-2]

Cat. No. GTX110348

Host	Rabbit
Clonality	Polyclonal
Isotype	IgG
Applications	WB, ICC/IF, IHC-P
Reactivity	Human

References (2)

Package

100 µl, 25 µl

Applications

Application Note

*Optimal dilutions/concentrations should be determined by the researcher.

Suggested dilution	Recommended dilution
WB	1:500-1:3000
ICC/IF	1:100-1:1000
IHC-P	1:100-1:1000

Not tested in other applications.

Calculated MW 46 kDa. ([Note](#))

Properties

Form	Liquid
Buffer	0.1M Tris, 0.1M Glycine, 10% Glycerol
Preservative	0.01% Thimerosal
Storage	Store as concentrated solution. Centrifuge briefly prior to opening vial. For short-term storage (1-2 weeks), store at 4°C. For long-term storage, aliquot and store at -20°C or below. Avoid multiple freeze-thaw cycles.
Concentration	1 mg/ml (Please refer to the vial label for the specific concentration.)
Immunogen	Recombinant protein encompassing a sequence within the center region of human Aminoacylase 1. The exact sequence is proprietary.
Purification	Purified by antigen-affinity chromatography.
Conjugation	Unconjugated

Note

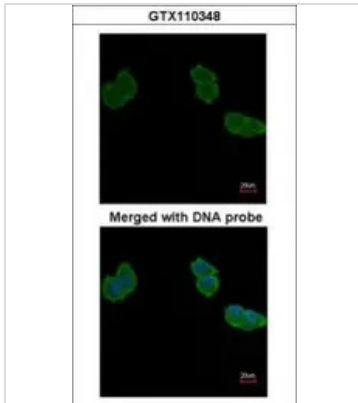
For laboratory research use only. Not for any clinical, therapeutic, or diagnostic use in humans or animals. Not for animal or human consumption.

Purchasers shall not, and agree not to enable third parties to, analyze, copy, reverse engineer or otherwise attempt to determine the structure or sequence of the product.



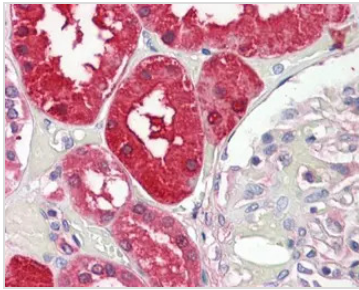
For full product information, images and publications, please visit our [website](#).

DATA IMAGES



GTx110348 ICC/IF Image

Immunofluorescence analysis of paraformaldehyde-fixed A431, using Aminoacylase-1(GTx110348) antibody at 1:200 dilution.



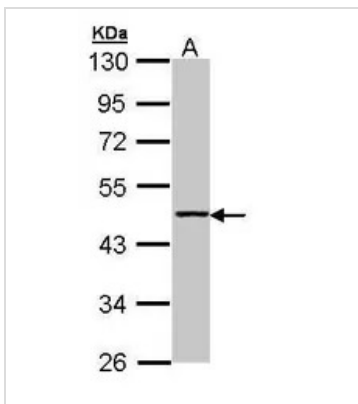
GTx110348 IHC-P Image

Aminoacylase 1 antibody [N2C3-2] detects Aminoacylase-1 protein at cytoplasm on human placenta by immunohistochemical analysis.

Sample: Paraffin-embedded placenta.

Aminoacylase 1 antibody [N2C3-2] (GTx110348) dilution: 1:100.

Antigen Retrieval: Trilogy™ (EDTA based, pH 8.0) buffer, 15min



GTx110348 WB Image

Sample (30 ug of whole cell lysate)

A: H1299

10% SDS PAGE

GTx110348 diluted at 1:1000



For full product information, images and publications, please visit our [website](https://www.genetex.com).