

alpha 1 Antichymotrypsin antibody

Cat. No. GTX110359

| | |
|--------------|------------|
| Host | Rabbit |
| Clonality | Polyclonal |
| Isotype | IgG |
| Applications | WB |
| Reactivity | Human |

References (1)

Package

100 µl, 25 µl

Applications

Application Note

*Optimal dilutions/concentrations should be determined by the researcher.

| Suggested dilution | Recommended dilution |
|--------------------|----------------------|
| WB | 1:1000-1:10000 |

Not tested in other applications.

| | |
|-------------------|----------------------------------|
| Calculated MW | 48 kDa. (Note) |
| Observed MW (kDa) | 50-70 kDa. |

Properties

| | |
|---------------|--|
| Form | Liquid |
| Buffer | PBS, 20% Glycerol |
| Preservative | 0.01% Thimerosal |
| Storage | Store as concentrated solution. Centrifuge briefly prior to opening vial. For short-term storage (1-2 weeks), store at 4°C. For long-term storage, aliquot and store at -20°C or below. Avoid multiple freeze-thaw cycles. |
| Concentration | 1 mg/ml (Please refer to the vial label for the specific concentration.) |
| Immunogen | Recombinant protein encompassing a sequence within the center region of human alpha 1 Antichymotrypsin. The exact sequence is proprietary. |
| Purification | Purified by antigen-affinity chromatography. |
| Conjugation | Unconjugated |

Note

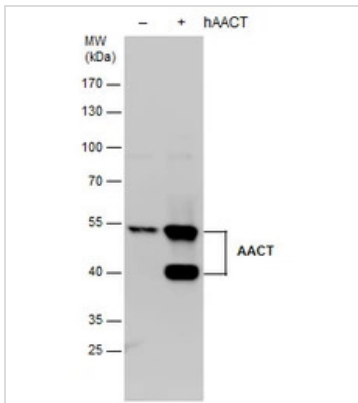
For laboratory research use only. Not for any clinical, therapeutic, or diagnostic use in humans or animals. Not for animal or human consumption.

Purchasers shall not, and agree not to enable third parties to, analyze, copy, reverse engineer or otherwise attempt to determine the structure or sequence of the product.



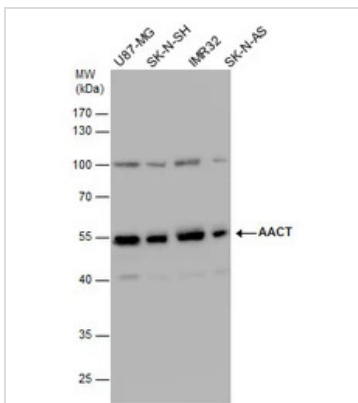
For full product information, images and publications, please visit our [website](#).

DATA IMAGES



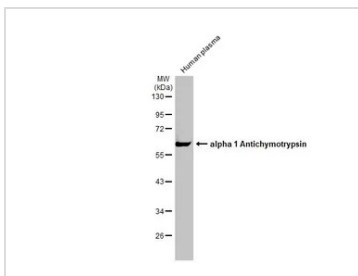
GTx110359 WB Image

AACT antibody detects AACT protein by western blot analysis. Non-transfected (-) and AACT-transfected (+,) 293T whole cell extracts (30 µg) were separated by 10% SDS-PAGE, and the membrane was blotted with AACT antibody (GTx110359) diluted by 1:5000. 40 kDa may be possible degradation



GTx110359 WB Image

AACT antibody detects AACT protein by western blot analysis. Various whole cell extracts (30 µg) were separated by 10% SDS-PAGE, and the membrane was blotted with AACT antibody (GTx110359) diluted by 1:1000. The observed M.W. is based on the publication: PMID: 35147994.



GTx110359 WB Image

Human plasma (30 µg) was separated by 10% SDS-PAGE, and the membrane was blotted with alpha 1 Antichymotrypsin antibody (GTx110359) diluted at 1:1000. The HRP-conjugated anti-rabbit IgG antibody (GTx213110-01) was used to detect the primary antibody. The observed M.W. is based on the publication: PMID: 35147994.



For full product information, images and publications, please visit our [website](https://www.genetex.com).