

## ENaC Alpha antibody [N3C2], Internal

Cat. No. GTX110436

<b>Host</b>	Rabbit
<b>Clonality</b>	Polyclonal
<b>Isotype</b>	IgG
<b>Applications</b>	WB, ICC/IF, IHC-P
<b>Reactivity</b>	Human, Mouse

**Package**  
100 µl, 25 µl

## Applications

**Application Note**

\*Optimal dilutions/concentrations should be determined by the researcher.

Suggested dilution	Recommended dilution
WB	1:500-1:3000
ICC/IF	Assay dependent
IHC-P	1:100-1:1000

Not tested in other applications.

**Calculated MW** 76 kDa. ([Note](#))

## Properties

<b>Form</b>	Liquid
<b>Buffer</b>	PBS, 20% Glycerol
<b>Preservative</b>	0.025% ProClin 300
<b>Storage</b>	Store as concentrated solution. Centrifuge briefly prior to opening vial. For short-term storage (1-2 weeks), store at 4°C. For long-term storage, aliquot and store at -20°C or below. Avoid multiple freeze-thaw cycles.
<b>Concentration</b>	1.24 mg/ml (Please refer to the vial label for the specific concentration.)
<b>Immunogen</b>	Recombinant protein encompassing a sequence within the Extracellular domain of human ENaC Alpha. The exact sequence is proprietary.
<b>Purification</b>	Purified by antigen-affinity chromatography.
<b>Conjugation</b>	Unconjugated

**Note**

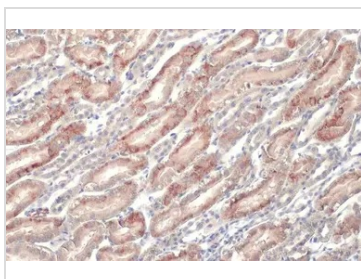
For laboratory research use only. Not for any clinical, therapeutic, or diagnostic use in humans or animals. Not for animal or human consumption.

Purchasers shall not, and agree not to enable third parties to, analyze, copy, reverse engineer or otherwise attempt to determine the structure or sequence of the product.



For full product information, images and publications, please visit our [website](#).

DATA IMAGES



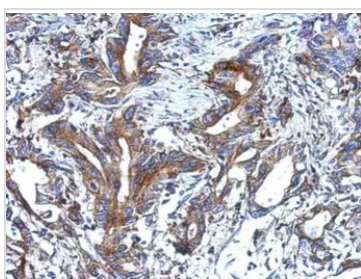
**GTX110436 IHC-P Image**

ENaC Alpha antibody [N3C2], Internal detects ENaC Alpha protein at cytoplasm by immunohistochemical analysis.

Sample: Paraffin-embedded mouse kidney.

ENaC Alpha stained by ENaC Alpha antibody [N3C2], Internal (GTX110436) diluted at 1:500.

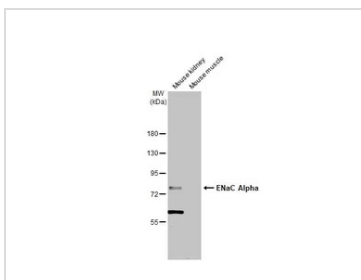
Antigen Retrieval: Citrate buffer, pH 6.0, 15 min



**GTX110436 IHC-P Image**

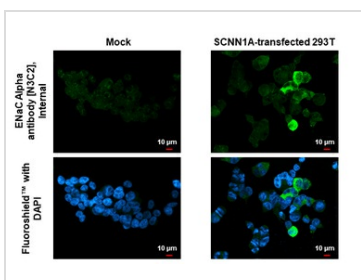
Immunohistochemical analysis of paraffin-embedded human colon carcinoma, using SCNN1A(GTX110436) antibody at 1:500 dilution.

Antigen Retrieval: Trilogy™ (EDTA based, pH 8.0) buffer, 15min



**GTX110436 WB Image**

Various tissue extracts (50 µg) were separated by 7.5% SDS-PAGE, and the membrane was blotted with ENaC Alpha antibody [N3C2], Internal (GTX110436) diluted at 1:1000. The HRP-conjugated anti-rabbit IgG antibody (GTX213110-01) was used to detect the primary antibody.



**GTX110436 ICC/IF Image**

ENaC Alpha antibody [N3C2], Internal detects ENaC Alpha protein by immunofluorescent analysis.

Sample: Mock and transfected 293T cells were fixed in 4% paraformaldehyde at RT for 15 min.

Green: ENaC Alpha stained by ENaC Alpha antibody [N3C2], Internal (GTX110436) diluted at 1:500.

Blue: Fluoroshield with DAPI (GTX30920).



For full product information, images and publications, please visit our [website](#).