

## TDG antibody

Cat. No. GTX110473

|              |              |
|--------------|--------------|
| Host         | Rabbit       |
| Clonality    | Polyclonal   |
| Isotype      | IgG          |
| Applications | WB, ICC/IF   |
| Reactivity   | Human, Mouse |

References ( 6 )

Package

100 µl, 25 µl

## Applications

## Application Note

\*Optimal dilutions/concentrations should be determined by the researcher.

| Suggested dilution | Recommended dilution |
|--------------------|----------------------|
| WB                 | 1:5000-1:20000       |
| ICC/IF             | 1:100-1:1000         |

Not tested in other applications.

Calculated MW 46 kDa. ( [Note](#) )

## Properties

|               |  |
|---------------|--|
| Form          | Liquid   |
| Buffer        | PBS, 20% Glycerol  |
| Preservative  | 0.01% Thimerosal   |
| Storage       | Store as concentrated solution. Centrifuge briefly prior to opening vial. For short-term storage (1-2 weeks), store at 4°C. For long-term storage, aliquot and store at -20°C or below. Avoid multiple freeze-thaw cycles. |
| Concentration | 1 mg/ml (Please refer to the vial label for the specific concentration.)   |
| Immunogen     | Recombinant protein encompassing a sequence within the center region of human TDG. The exact sequence is proprietary.  |
| Purification  | Purified by antigen-affinity chromatography.   |
| Conjugation   | Unconjugated   |

## Note

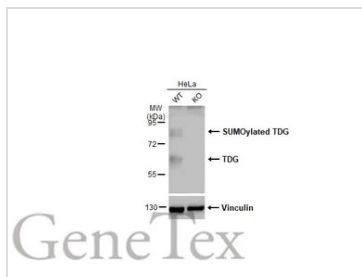
For laboratory research use only. Not for any clinical, therapeutic, or diagnostic use in humans or animals. Not for animal or human consumption.

Purchasers shall not, and agree not to enable third parties to, analyze, copy, reverse engineer or otherwise attempt to determine the structure or sequence of the product.

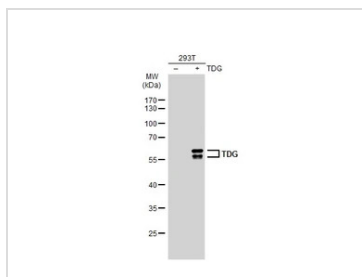


For full product information, images and publications, please visit our [website](#).

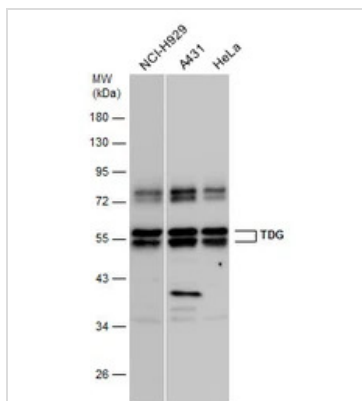
## DATA IMAGES


**GTX110473 WB Image**

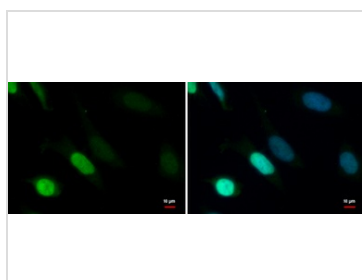
Wild-type (WT) and TDG knockout (KO) HeLa cell extracts (30  $\mu$ g) were separated by 7.5% SDS-PAGE, and the membrane was blotted with TDG antibody (GTX110473) diluted at 1:500. The HRP-conjugated anti-rabbit IgG antibody (GTX213110-01) was used to detect the primary antibody. The observed M.W. is based on the publication: PMID: 26917720


**GTX110473 WB Image**

Non-transfected (-) and transfected (+) 293T whole cell extracts (30  $\mu$ g) were separated by 10% SDS-PAGE, and the membrane was blotted with TDG antibody (GTX110473) diluted at 1:5000. The HRP-conjugated anti-rabbit IgG antibody (GTX213110-01) was used to detect the primary antibody.


**GTX110473 WB Image**

Various whole cell extracts (30  $\mu$ g) were separated by 10% SDS-PAGE, and the membrane was blotted with TDG antibody (GTX110473) diluted at 1:500.


**GTX110473 ICC/IF Image**

TDG antibody detects TDG protein at nucleus by immunofluorescent analysis. Sample: HeLa cells were fixed in 4% paraformaldehyde at RT for 15 min. Green: TDG protein stained by TDG antibody (GTX110473) diluted at 1:1000. Blue: Hoechst 33342 staining.



For full product information, images and publications, please visit our [website](https://www.genetex.com).