

## FRAT1 antibody [C2C3], C-term

Cat. No. GTX110492

Host	Rabbit
Clonality	Polyclonal
Isotype	IgG
Applications	WB, ICC/IF, IHC-P
Reactivity	Human, Mouse

Package  
100 µl, 25 µl

## Applications

## Application Note

\*Optimal dilutions/concentrations should be determined by the researcher.

Suggested dilution	Recommended dilution
WB	1:500-1:3000
ICC/IF	1:100-1:1000
IHC-P	1:100-1:1000

Not tested in other applications.

Calculated MW 29 kDa. ( [Note](#) )

## Properties

Form	Liquid
Buffer	0.1M Tris, 0.1M Glycine, 10% Glycerol
Preservative	0.01% Thimerosal
Storage	Store as concentrated solution. Centrifuge briefly prior to opening vial. For short-term storage (1-2 weeks), store at 4°C. For long-term storage, aliquot and store at -20°C or below. Avoid multiple freeze-thaw cycles.
Concentration	1 mg/ml (Please refer to the vial label for the specific concentration.)
Immunogen	Carrier-protein conjugated synthetic peptide encompassing a sequence within the C-terminus region of human FRAT1. The exact sequence is proprietary.
Purification	Purified by antigen-affinity chromatography.
Conjugation	Unconjugated

## Note

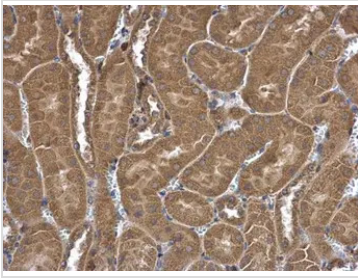
For laboratory research use only. Not for any clinical, therapeutic, or diagnostic use in humans or animals. Not for animal or human consumption.

Purchasers shall not, and agree not to enable third parties to, analyze, copy, reverse engineer or otherwise attempt to determine the structure or sequence of the product.



For full product information, images and publications, please visit our [website](#).

## DATA IMAGES



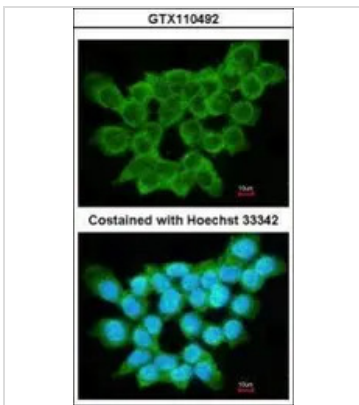
### GTx110492 IHC-P Image

FRAT1 antibody [C2C3], C-term detects FRAT1 protein at cytoplasm in mouse kidney by immunohistochemical analysis.

Sample: Paraffin-embedded mouse kidney.

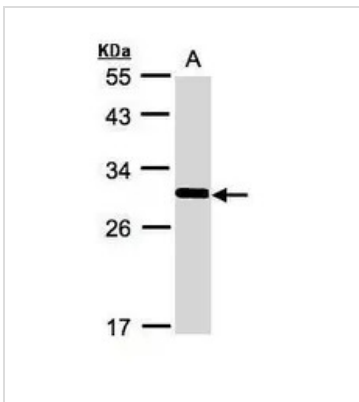
FRAT1 antibody [C2C3], C-term (GTx110492) diluted at 1:500.

Antigen Retrieval: Citrate buffer, pH 6.0, 15 min



### GTx110492 ICC/IF Image

Immunofluorescence analysis of methanol-fixed A431, using FRAT1(GTx110492) antibody at 1:200 dilution.



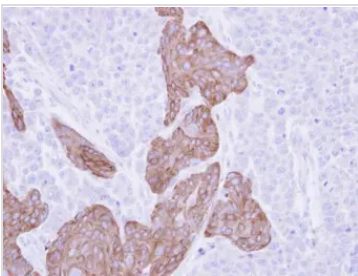
### GTx110492 WB Image

Sample(30 ug whole cell lysate)

A:A431(GTx27909)

12% SDS PAGE

GTx110492 diluted at 1:1000



### GTx110492 IHC-P Image

Immunohistochemical analysis of paraffin-embedded SG xenograft, using FRAT1(GTx110492) antibody at 1:500 dilution.

Antigen Retrieval: Citrate buffer, pH 6.0, 15 min



For full product information, images and publications, please visit our [website](https://www.genetex.com).