

TNF alpha antibody

Cat. No. GTX110520

Host	Rabbit
Clonality	Polyclonal
Isotype	IgG
Applications	WB, ICC/IF, IHC-P, IHC-Fr
Reactivity	Human, Mouse, Rat, Bovine

References (93)

★★★★☆ Review (2)

Package

100 µl, 25 µl

PRODUCT

Summary

TNF alpha antibody recognizes tumor necrosis factor alpha protein, a cytokine with a predicted molecular weight of 26 kDa. TNF alpha is mainly secreted by macrophages, but is also produced by various immune cells such as neutrophils, T helper cells, and NK cells. Dysregulation of TNF alpha expression is associated with various diseases including cancers and autoimmune disorders.

Applications

Application Note

*Optimal dilutions/concentrations should be determined by the researcher.

Suggested dilution	Recommended dilution
WB	1:500-1:3000
ICC/IF	1:100-1:1000
IHC-P	1:100-1:1000
IHC-Fr	Assay dependent

Not tested in other applications.

Calculated MW 26 kDa. ([Note](#))

Properties

Form	Liquid
Buffer	PBS, 1% BSA, 20% Glycerol
Preservative	0.025% ProClin 300
Storage	Store as concentrated solution. Centrifuge briefly prior to opening vial. For short-term storage (1-2 weeks), store at 4°C. For long-term storage, aliquot and store at -20°C or below. Avoid multiple freeze-thaw cycles.
Concentration	0.28 mg/ml (Please refer to the vial label for the specific concentration.)
Immunogen	Full length human TNF alpha Recombinant protein.
Purification	Purified by antigen-affinity chromatography.



For full product information, images and publications, please visit our [website](#).

Conjugation

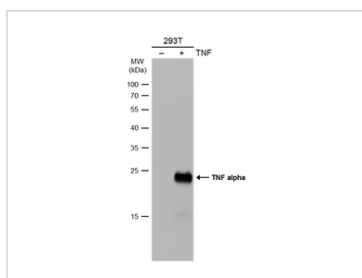
Unconjugated

Note

For laboratory research use only. Not for any clinical, therapeutic, or diagnostic use in humans or animals. Not for animal or human consumption.

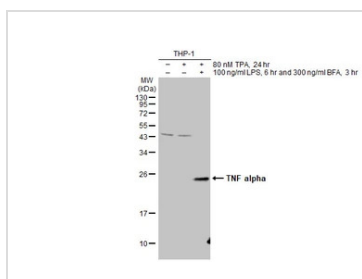
Purchasers shall not, and agree not to enable third parties to, analyze, copy, reverse engineer or otherwise attempt to determine the structure or sequence of the product.

DATA IMAGES



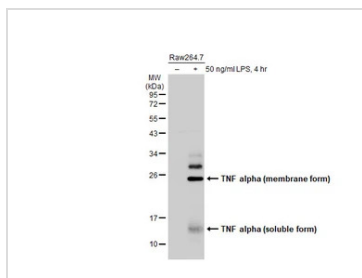
GTX110520 WB Image

Non-transfected (-) and transfected (+) 293T whole cell extracts (30 µg) were separated by 12% SDS-PAGE, and the membrane was blotted with TNF alpha antibody (GTX110520) diluted at 1:1000. The HRP-conjugated anti-rabbit IgG antibody (GTX213110-01) was used to detect the primary antibody.



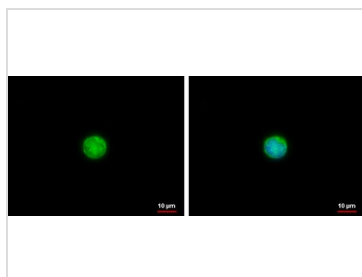
GTX110520 WB Image

Untreated (-) and treated (+) THP-1 whole cell extracts (30 µg) were separated by 12% SDS-PAGE, and the membrane was blotted with TNF alpha antibody (GTX110520) diluted at 1:500. The HRP-conjugated anti-rabbit IgG antibody (GTX213110-01) was used to detect the primary antibody.



GTX110520 WB Image

Untreated (-) and treated (+) Raw264.7 whole cell extracts (30 µg) were separated by 12% SDS-PAGE, and the membrane was blotted with TNF alpha antibody (GTX110520) diluted at 1:1000. The HRP-conjugated anti-rabbit IgG antibody (GTX213110-01) was used to detect the primary antibody.



GTX110520 ICC/IF Image

TNF alpha antibody detects TNF alpha protein at membrane by immunofluorescent analysis.

Sample: jurkat cells were fixed in 4% paraformaldehyde at RT for 15 min.

Green: TNF alpha protein stained by TNF alpha antibody (GTX110520) diluted at 1:500.

Blue: Hoechst 33342 staining.



For full product information, images and publications, please visit our [website](https://www.genetex.com).