

## IL6 antibody

**Cat. No. GTX110527**

<b>Host</b>	Rabbit
<b>Clonality</b>	Polyclonal
<b>Isotype</b>	IgG
<b>Applications</b>	WB, IHC-P, IHC-Fr
<b>Reactivity</b>	Human, Mouse, Rat

References ( 62 )

★★★★☆ Review ( 6 )

Package

100 µl, 25 µl

## Applications

**Application Note**

\*Optimal dilutions/concentrations should be determined by the researcher.

Suggested dilution	Recommended dilution
WB	1:500-1:3000
IHC-P	1:100-1:1000
IHC-Fr	Assay dependent

Not tested in other applications.

**Calculated MW** 24 kDa. ( [Note](#) )**Product Note** KO/KD validation is based on published data (PMID: 28784136).

## Properties

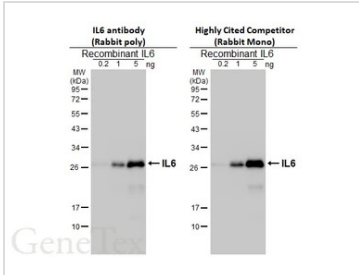
<b>Form</b>	Liquid
<b>Buffer</b>	PBS, 20% Glycerol
<b>Preservative</b>	0.025% ProClin 300
<b>Storage</b>	Store as concentrated solution. Centrifuge briefly prior to opening vial. For short-term storage (1-2 weeks), store at 4°C. For long-term storage, aliquot and store at -20°C or below. Avoid multiple freeze-thaw cycles.
<b>Concentration</b>	0.72 mg/ml (Please refer to the vial label for the specific concentration.)
<b>Immunogen</b>	Full length human IL6 Recombinant protein.
<b>Purification</b>	Purified by antigen-affinity chromatography.
<b>Conjugation</b>	Unconjugated

For full product information, images and publications, please visit our [website](#).

For laboratory research use only. Not for any clinical, therapeutic, or diagnostic use in humans or animals. Not for animal or human consumption.

**Note**  
Purchasers shall not, and agree not to enable third parties to, analyze, copy, reverse engineer or otherwise attempt to determine the structure or sequence of the product.

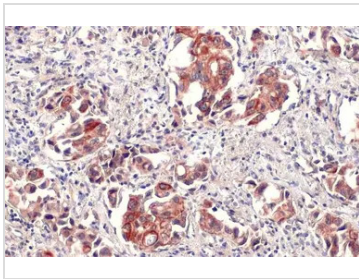
DATA IMAGES



**GTX110527 WB Image**

Recombinant protein IL-6 were separated by 12% SDS-PAGE, and the membranes were blotted with IL6 antibody (GTX110527) diluted at 1:1000 and highly cited competitor's antibody diluted at 1:2000. The HRP-conjugated anti-rabbit IgG antibody (GTX213110-01) was used to detect the primary antibody.

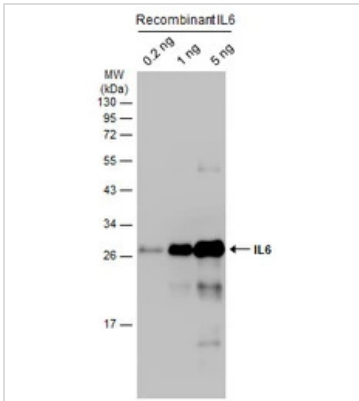
\*The competitor is not affiliated with GeneTex and does not endorse this product.



**GTX110527 IHC-P Image**

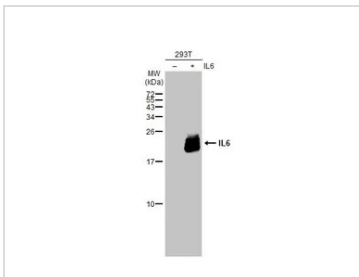
IL6 antibody detects IL6 protein at cell membrane and cytoplasm by immunohistochemical analysis.

Sample: Paraffin-embedded human lung cancer.  
IL6 stained by IL6 antibody (GTX110527) diluted at 1:500.  
Antigen Retrieval: Citrate buffer, pH 6.0, 15 min



**GTX110527 WB Image**

Recombinant IL6 were separated by 12% SDS-PAGE, and the membrane was blotted with IL6 antibody (GTX110527) diluted at 1:2000. The HRP-conjugated anti-rabbit IgG antibody (GTX213110-01) was used to detect the primary antibody.



**GTX110527 WB Image**

Non-transfected (-) and transfected (+) 293T whole cell extracts (30 µg) were separated by 12% SDS-PAGE, and the membrane was blotted with IL6 antibody (GTX110527) diluted at 1:1500. The HRP-conjugated anti-rabbit IgG antibody (GTX213110-01) was used to detect the primary antibody.



For full product information, images and publications, please visit our [website](#).