

TC21 antibody [N1C3]

Cat. No. GTX110559

Host	Rabbit
Clonality	Polyclonal
Isotype	IgG
Applications	WB, IHC-P, IHC-Wm
Reactivity	Human, Mouse, Zebrafish

Package
100 µl, 25 µl

Applications

Application Note

*Optimal dilutions/concentrations should be determined by the researcher.

Suggested dilution	Recommended dilution
WB	1:1000-1:10000
IHC-P	1:100-1:1000
IHC-Wm	Assay dependent

Not tested in other applications.

Calculated MW 23 kDa. ([Note](#))

Properties

Form	Liquid
Buffer	0.1M Tris, 0.1M Glycine, 10% Glycerol
Preservative	0.01% Thimerosal
Storage	Store as concentrated solution. Centrifuge briefly prior to opening vial. For short-term storage (1-2 weeks), store at 4°C. For long-term storage, aliquot and store at -20°C or below. Avoid multiple freeze-thaw cycles.
Concentration	0.69 mg/ml (Please refer to the vial label for the specific concentration.)
Immunogen	Recombinant protein encompassing a sequence within the center region of human TC21. The exact sequence is proprietary.
Purification	Purified by antigen-affinity chromatography.
Conjugation	Unconjugated

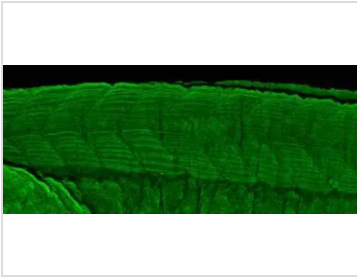
Note

For laboratory research use only. Not for any clinical, therapeutic, or diagnostic use in humans or animals. Not for animal or human consumption.

Purchasers shall not, and agree not to enable third parties to, analyze, copy, reverse engineer or otherwise attempt to determine the structure or sequence of the product.



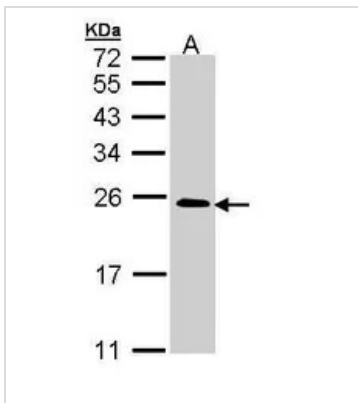
For full product information, images and publications, please visit our [website](#).

DATA IMAGES

GTx110559 IHC-Wm Image

TC21 antibody [N1C3] detects TC21 protein on whole-mount zebrafish embryos by immunohistochemical analysis.

Sample: Paraformaldehyde-fixed zebrafish embryos.

TC21 antibody [N1C3] (GTx110559) dilution: 1:200.

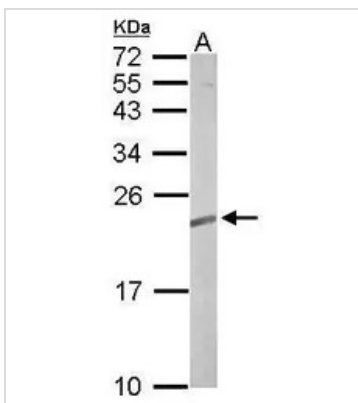

GTx110559 WB Image

Sample (30 ug of whole cell lysate)

A: A431 (GTx27909)

12% SDS PAGE

GTx110559 diluted at 1:5000

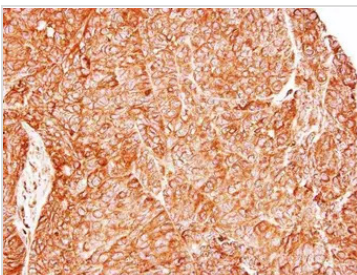

GTx110559 WB Image

Sample (50 ug of whole cell lysate)

A: mouse brain

12% SDS PAGE

GTx110559 diluted at 1:5000


GTx110559 IHC-P Image

Immunohistochemical analysis of paraffin-embedded DLD1 xenograft, using TC21(GTx110559) antibody at 1:500 dilution.

Antigen Retrieval: Trilogy™ (EDTA based, pH 8.0) buffer, 15min



For full product information, images and publications, please visit our [website](https://www.genetex.com).