

## Bid antibody [N1C3-2]

Cat. No. GTX110568

Host	Rabbit
Clonality	Polyclonal
Isotype	IgG
Applications	WB, ICC/IF, IHC-P, IP
Reactivity	Human, Mouse, Rat

References ( 5 )

Package

100 µl, 25 µl

## Applications

## Application Note

\*Optimal dilutions/concentrations should be determined by the researcher.

Suggested dilution	Recommended dilution
WB	1:500-1:3000
ICC/IF	1:100-1:1000
IHC-P	1:100-1:1000
IP	1:100-1:500

Not tested in other applications.

**Calculated MW** 22 kDa. ( [Note](#) )

**Product Note** IP/MS validation is based on published data (PMID: 30377403).

## Properties

Form	Liquid
Buffer	0.1M Tris, 0.1M Glycine, 10% Glycerol
Preservative	0.01% Thimerosal
Storage	Store as concentrated solution. Centrifuge briefly prior to opening vial. For short-term storage (1-2 weeks), store at 4°C. For long-term storage, aliquot and store at -20°C or below. Avoid multiple freeze-thaw cycles.
Concentration	1 mg/ml (Please refer to the vial label for the specific concentration.)
Immunogen	Full length human Bid Recombinant protein.
Purification	Purified by antigen-affinity chromatography.
Conjugation	Unconjugated

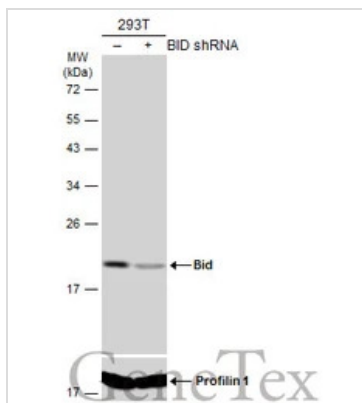


For full product information, images and publications, please visit our [website](#).

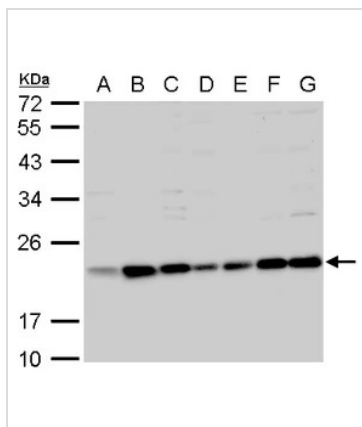
For laboratory research use only. Not for any clinical, therapeutic, or diagnostic use in humans or animals. Not for animal or human consumption.

**Note**

Purchasers shall not, and agree not to enable third parties to, analyze, copy, reverse engineer or otherwise attempt to determine the structure or sequence of the product.

**DATA IMAGES**

**GTx110568 WB Image**

Non-transfected (-) and transfected (+) 293T whole cell extracts (60 µg) were separated by 12% SDS-PAGE, and the membrane was blotted with Bid antibody [N1C3-2] (GTx110568) diluted at 1:1000. The HRP-conjugated anti-rabbit IgG antibody (GTx213110-01) was used to detect the primary antibody.

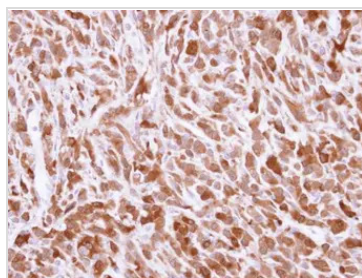

**GTx110568 WB Image**

Bid antibody [N1C3-2] detects Bid protein by western blot analysis.

- A. 30 µg 293T whole cell lysate/extract
- B. 30 µg A431 whole cell lysate/extract
- C. 30 µg H1299 whole cell lysate/extract
- D. 30 µg HeLa whole cell lysate/extract
- E. 30 µg HepG2 whole cell lysate/extract
- F. 30 µg Molt-4 whole cell lysate/extract
- G. 30 µg Raji whole cell lysate/extract

7.5 % SDS-PAGE

Bid antibody [N1C3-2] (GTx110568) dilution: 1:1000


**GTx110568 IHC-P Image**

Immunohistochemical analysis of paraffin-embedded U87 xenograft, using Bid(GTx110568) antibody at 1:500 dilution.

Antigen Retrieval: Citrate buffer, pH 6.0, 15 min



For full product information, images and publications, please visit our [website](http://www.genetex.com).