

SP1 antibody

Cat. No. GTX110593

Host	Rabbit
Clonality	Polyclonal
Isotype	IgG
Applications	WB, ICC/IF, IHC-P, IP, ChIP assay
Reactivity	Human

References (10)

★★★★★ Review (3)

Package

100 µl, 25 µl

Applications

Application Note

*Optimal dilutions/concentrations should be determined by the researcher.

Suggested dilution	Recommended dilution
WB	1:500-1:3000
ICC/IF	1:100-1:1000
IHC-P	1:100-1:1000
IP	1:100-1:500
ChIP assay	Assay dependent

Not tested in other applications.

Calculated MW 81 kDa. ([Note](#))

Product Note We do not recommend use of this product for Mouse,Rat samples.
KO/KD validation is based on published data (PMID: 32290085).

Properties

Form	Liquid
Buffer	PBS, 20% Glycerol
Preservative	0.025% ProClin 300
Storage	Store as concentrated solution. Centrifuge briefly prior to opening vial. For short-term storage (1-2 weeks), store at 4°C. For long-term storage, aliquot and store at -20°C or below. Avoid multiple freeze-thaw cycles.
Concentration	0.88 mg/ml (Please refer to the vial label for the specific concentration.)
Immunogen	Recombinant protein encompassing a sequence within the center region of human SP1. The exact sequence is proprietary.
Purification	Purified by antigen-affinity chromatography.
Conjugation	Unconjugated



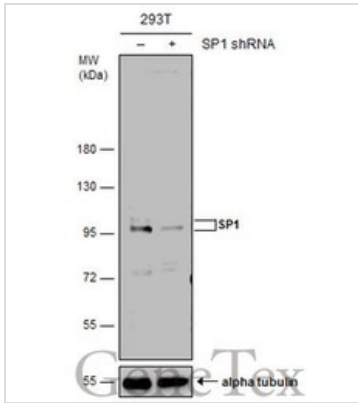
For full product information, images and publications, please visit our [website](#).

Date 2025 / 07 / 16 Page 1 of 2

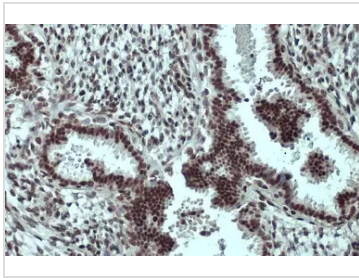
For laboratory research use only. Not for any clinical, therapeutic, or diagnostic use in humans or animals. Not for animal or human consumption.

Note

Purchasers shall not, and agree not to enable third parties to, analyze, copy, reverse engineer or otherwise attempt to determine the structure or sequence of the product.

DATA IMAGES

GTK110593 WB Image

Non-transfected (-) and transfected (+) 293T whole cell extracts (50 µg) were separated by 7.5% SDS-PAGE, and the membrane was blotted with SP1 antibody (GTK110593) diluted at 1:10000. The HRP-conjugated anti-rabbit IgG antibody (GTK213110-01) was used to detect the primary antibody, and the signal was developed with Trident ECL plus-Enhanced.

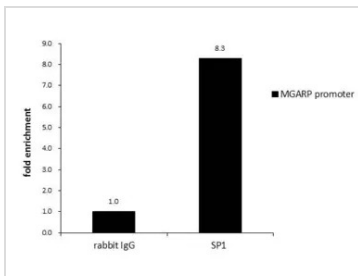

GTK110593 IHC-P Image

SP1 antibody detects SP1 protein at nucleus by immunohistochemical analysis.

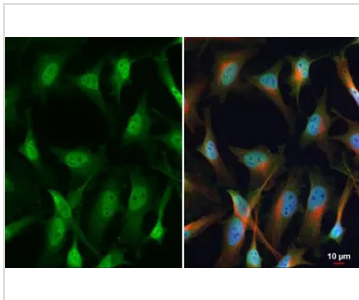
Sample: Paraffin-embedded human breast carcinoma.

SP1 stained by SP1 antibody (GTK110593) diluted at 1:500.

Antigen Retrieval: Citrate buffer, pH 6.0, 15 min


GTK110593 ChIP assay Image

ChIP was performed with 293T chromatin extract and 5 µg of either normal rabbit IgG or anti-SP1 antibody. The precipitated DNA was detected by PCR with primer set targeting to MGARP promoter.


GTK110593 ICC/IF Image

SP1 antibody detects SP1 protein at nucleus by immunofluorescent analysis.

Sample: HeLa cells were fixed in 4% paraformaldehyde at RT for 15 min.

Green: SP1 stained by SP1 antibody (GTK110593) diluted at 1:100.

Red: alpha Tubulin, a cytoskeleton marker, stained by alpha Tubulin antibody [GT114] (GTK628802) diluted at 1:1000.

Blue: Fluoroshield with DAPI (GTK30920).



For full product information, images and publications, please visit our [website](https://www.genetex.com).