

AKT1 antibody

Cat. No. GTX110613

Host	Rabbit
Clonality	Polyclonal
Isotype	IgG
Application	WB, IHC-P, IP
Reactivity	Human, Mouse

Reference (8)

★★★★★ Review (1)

Package

100 µl, 25 µl

APPLICATION

Application Note

*Optimal dilutions/concentrations should be determined by the researcher.

Suggested dilution	Recommended dilution
WB	1:1000-1:10000
IHC-P	1:100-1:1000
IP	1:100-1:500

Not tested in other applications.

Calculated MW	56 kDa. (Note)
Product Note	IP/MS validation was supported by references (PMID:30377404)

PROPERTIES

Form	Liquid
Buffer	PBS, 1% BSA, 20% Glycerol
Preservative	0.025% ProClin 300
Storage	Store as concentrated solution. Centrifuge briefly prior to opening vial. For short-term storage (1-2 weeks), store at 4°C. For long-term storage, aliquot and store at -20°C or below. Avoid multiple freeze-thaw cycles.
Concentration	0.47 mg/ml (Please refer to the vial label for the specific concentration.)
Immunogen	Recombinant protein encompassing a sequence within the center region of human Akt1. The exact sequence is proprietary.
Purification	Purified by antigen-affinity chromatography.
Conjugation	Unconjugated

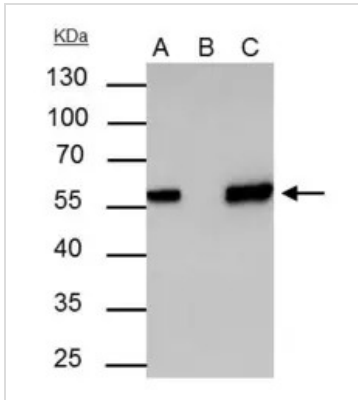


For full product information, images and publications, please visit our [website](#).

For laboratory research use only. Not for any clinical, therapeutic, or diagnostic use in humans or animals. Not for animal or human consumption.

Note

Purchasers shall not, and agree not to enable third parties to, analyze, copy, reverse engineer or otherwise attempt to determine the structure or sequence of the product.

DATA IMAGES

GTK110613 IP Image

Akt1 antibody immunoprecipitates Akt1 protein in IP experiments.

IP samples: 30 µg whole cell extract of Akt1-transfected 293T cells.

A. 30 µg whole cell extract of Akt1-protein expressing 293T cell

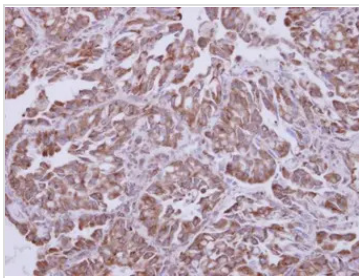
B. Control with 3 µg of preimmune Rabbit IgG

C. Immunoprecipitation of Akt1 protein by 3 µg Akt1 antibody (GTK110613)

10 % SDS-PAGE

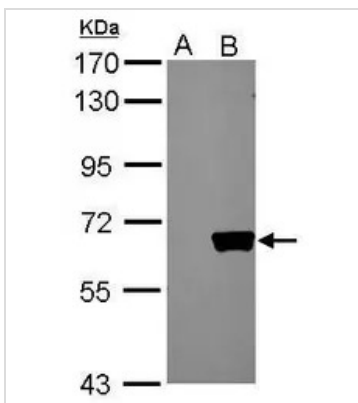
The immunoprecipitated Akt1 protein was detected by Akt1 antibody (GTK110613) diluted at 1:5000.

[EasyBlot anti-rabbit IgG (GTK221666-01) was used as a secondary reagent]


GTK110613 IHC-P Image

Immunohistochemical analysis of paraffin-embedded human lung adenocarcinoma, using Akt1(GTK110613) antibody at 1:250 dilution.

Antigen Retrieval: Trilogy™ (EDTA based, pH 8.0) buffer, 15min


GTK110613 WB Image

Sample (20 ug of whole cell lysate)

A: HeLa cell lysate

B: HeLa cell transfect with AKT

7.5% SDS PAGE

GTK110613 diluted at 1:10000



For full product information, images and publications, please visit our [website](https://www.genetex.com).