

DDX3 antibody [N3C2], Internal

Cat. No. GTX110614

Host	Rabbit
Clonality	Polyclonal
Isotype	IgG
Applications	WB, ICC/IF, IHC-P
Reactivity	Human, Mouse

References (6)

Package

100 µl, 25 µl

Applications

Application Note

*Optimal dilutions/concentrations should be determined by the researcher.

Suggested dilution	Recommended dilution
WB	1:500-1:3000
ICC/IF	1:100-1:1000
IHC-P	1:100-1:1000

Not tested in other applications.

Properties

Form	Liquid
Buffer	PBS, 20% Glycerol
Preservative	0.025% ProClin 300
Storage	Store as concentrated solution. Centrifuge briefly prior to opening vial. For short-term storage (1-2 weeks), store at 4°C. For long-term storage, aliquot and store at -20°C or below. Avoid multiple freeze-thaw cycles.
Concentration	0.7 mg/ml (Please refer to the vial label for the specific concentration.)
Immunogen	Recombinant protein encompassing a sequence within the center region of human DDX3. The exact sequence is proprietary.
Purification	Purified by antigen-affinity chromatography.
Conjugation	Unconjugated

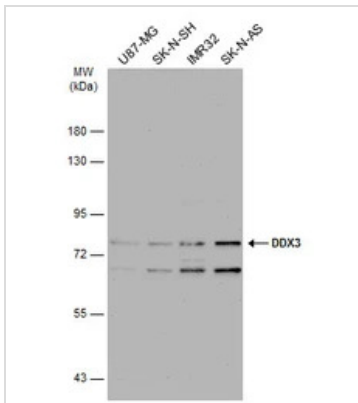
Note

For laboratory research use only. Not for any clinical, therapeutic, or diagnostic use in humans or animals. Not for animal or human consumption.

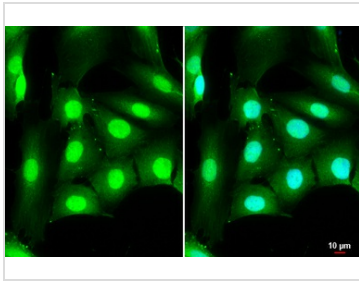
Purchasers shall not, and agree not to enable third parties to, analyze, copy, reverse engineer or otherwise attempt to determine the structure or sequence of the product.

For full product information, images and publications, please visit our [website](#).

DATA IMAGES

**GTX110614 WB Image**

Various whole cell extracts (30 μ g) were separated by 7.5% SDS-PAGE, and the membrane was blotted with DDX3 antibody [N3C2], Internal (GTX110614) diluted at 1:2000. The HRP-conjugated anti-rabbit IgG antibody (GTX213110-01) was used to detect the primary antibody.

**GTX110614 ICC/IF Image**

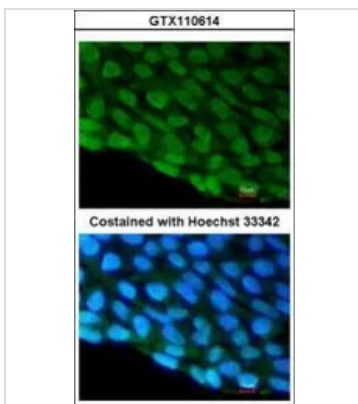
DDX3 antibody [N3C2], Internal detects DDX3 protein at cytoplasm and nucleus by immunofluorescent analysis.

Sample: SK-N-SH cells were fixed in 4% paraformaldehyde at RT for 15 min.

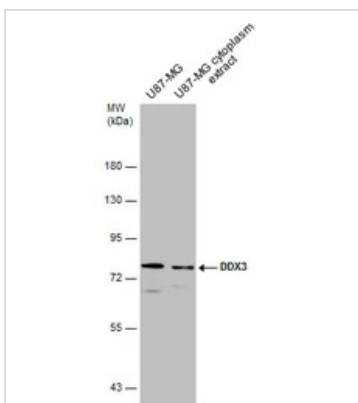
Green: DDX3 stained by DDX3 antibody [N3C2], Internal (GTX110614) diluted at 1:500.

Blue: Hoechst 33342 staining.

Scale bar= 10 μ m.

**GTX110614 ICC/IF Image**

Immunofluorescence analysis of paraformaldehyde-fixed Human ESC, using DDX3(GTX110614) antibody at 1:200 dilution.

**GTX110614 WB Image**

U87-MG whole cell and cytoplasm extracts (30 μ g) were separated by 7.5% SDS-PAGE, and the membrane was blotted with DDX3 antibody [N3C2], Internal (GTX110614) diluted at 1:2000.



For full product information, images and publications, please visit our [website](#).