

Citrate synthase antibody [N2C3]

Cat. No. GTX110624

Host	Rabbit
Clonality	Polyclonal
Isotype	IgG
Applications	WB, ICC/IF, IHC-P, IHC-Fr, IHC-Wm, IP
Reactivity	Human, Mouse, Rat, Zebrafish, Chicken, Monkey, Frog

References (27)

Package

100 µl, 25 µl

Applications

Application Note

*Optimal dilutions/concentrations should be determined by the researcher.

Suggested dilution	Recommended dilution
WB	1:500-1:3000
ICC/IF	1:100-1:1000
IHC-P	1:100-1:1000
IHC-Fr	Assay dependent
IHC-Wm	Assay dependent
IP	1:100-1:500

Not tested in other applications.

Calculated MW 52 kDa. ([Note](#))

Properties

Form	Liquid
Buffer	PBS, 20% Glycerol
Preservative	0.025% ProClin 300
Storage	Store as concentrated solution. Centrifuge briefly prior to opening vial. For short-term storage (1-2 weeks), store at 4°C. For long-term storage, aliquot and store at -20°C or below. Avoid multiple freeze-thaw cycles.
Concentration	1.26 mg/ml (Please refer to the vial label for the specific concentration.)
Immunogen	Recombinant protein encompassing a sequence within the center region of human Citrate synthetase. The exact sequence is proprietary.
Purification	Purified by antigen-affinity chromatography.
Conjugation	Unconjugated

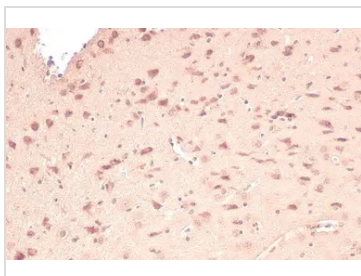


For full product information, images and publications, please visit our [website](#).

For laboratory research use only. Not for any clinical, therapeutic, or diagnostic use in humans or animals. Not for animal or human consumption.

Note

Purchasers shall not, and agree not to enable third parties to, analyze, copy, reverse engineer or otherwise attempt to determine the structure or sequence of the product.

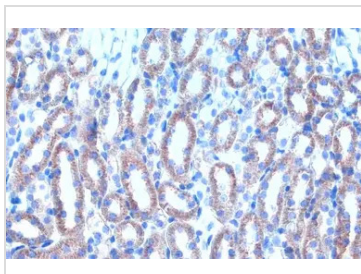
DATA IMAGES

GTx110624 IHC-P Image

Citrate synthase antibody [N2C3] detects Citrate synthase protein at mitochondria by immunohistochemical analysis.

Sample: Paraffin-embedded rat brain.

Citrate synthase stained by Citrate synthase antibody [N2C3] (GTx110624) diluted at 1:100.

Antigen Retrieval: Citrate buffer, pH 6.0, 15 min

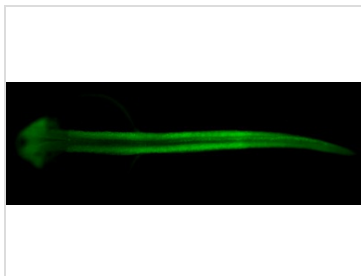

GTx110624 IHC-P Image

Citrate synthetase antibody [N2C3] detects Citrate synthetase protein at mitochondria by immunohistochemical analysis.

Sample: Paraffin-embedded mouse kidney.

Citrate synthetase stained by Citrate synthetase antibody [N2C3] (GTx110624) diluted at 1:500.

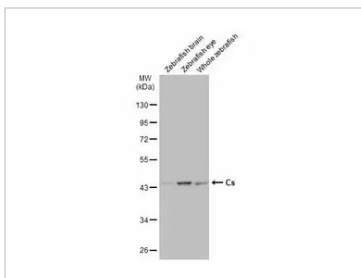
Antigen Retrieval: Citrate buffer, pH 6.0, 15 min


GTx110624 IHC-Wm Image

Citrate synthase antibody [N2C3] detects Citrate synthase protein on zebrafish by whole mount immunohistochemical analysis.

Sample: 1 day-post-fertilization zebrafish embryo.

Citrate synthase antibody [N2C3] (GTx110624) dilution: 1:50.


GTx110624 WB Image

Various tissue extracts (30 µg) were separated by 10% SDS-PAGE, and the membrane was blotted with Citrate synthase antibody [N2C3] (GTx110624) diluted at 1:500. The HRP-conjugated anti-rabbit IgG antibody (GTx213110-01) was used to detect the primary antibody.



For full product information, images and publications, please visit our [website](https://www.genetex.com).