

Drebrin antibody

Cat. No. GTX11068

Host	Rabbit
Clonality	Polyclonal
Isotype	IgG
Applications	WB, ICC/IF, IHC-P
Reactivity	Human, Rat

References (1)

Package

50 µl

Applications

Application Note

*Optimal dilutions/concentrations should be determined by the researcher.

Suggested dilution	Recommended dilution
WB	1:1,000
ICC/IF	Assay dependent
IHC-P	Assay dependent

Not tested in other applications.

Calculated MW	71 kDa. (Note)
Product Note	KO/KD validation is based on published data (PMID: 28319065).

Properties

Form	Liquid
Buffer	PBS
Preservative	15mM Sodium azide
Storage	Store as concentrated solution. Centrifuge briefly prior to opening vial. For short-term storage (1-2 weeks), store at 4°C. For long-term storage, aliquot and store at -20°C or below. Avoid multiple freeze-thaw cycles.
Concentration	Batch dependent (Please refer to the vial label for the specific concentration.)
Immunogen	synthetic peptide corresponding to the N-terminal region of human drebrin E/A (amino acids 22-42) conjugated to KLH.
Purification	IgG fraction
Conjugation	Unconjugated



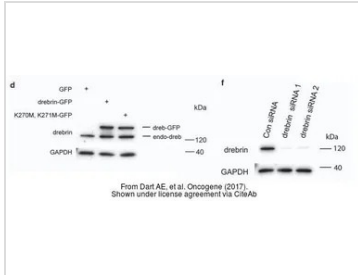
For full product information, images and publications, please visit our [website](#).

For laboratory research use only. Not for any clinical, therapeutic, or diagnostic use in humans or animals. Not for animal or human consumption.

Note

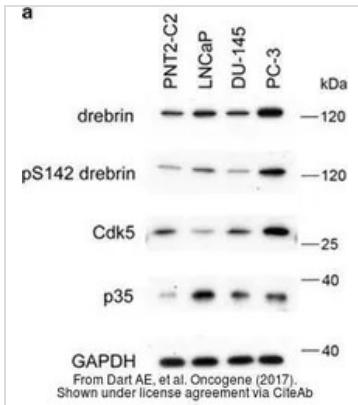
Purchasers shall not, and agree not to enable third parties to, analyze, copy, reverse engineer or otherwise attempt to determine the structure or sequence of the product.

DATA IMAGES



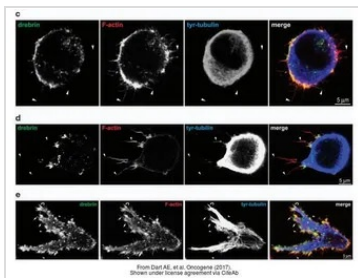
GTX11068 WB Image

The data was published in the journal Oncogene in 2017. [PMID: 28319065](#)



GTX11068 WB Image

The data was published in the journal Oncogene in 2017. [PMID: 28319065](#)



GTX11068 ICC/IF Image

The data was published in the journal Oncogene in 2017. [PMID: 28319065](#)



For full product information, images and publications, please visit our [website](#).