

# PEX19 antibody

**Cat. No. GTX110721**

|                    |                   |
|--------------------|-------------------|
| <b>Host</b>        | Rabbit            |
| <b>Clonality</b>   | Polyclonal        |
| <b>Isotype</b>     | IgG               |
| <b>Application</b> | WB, ICC/IF, IHC-P |
| <b>Reactivity</b>  | Human, Mouse, Rat |

Reference ( 1 )  
 Package  
 100 µl, 25 µl

## APPLICATION

### Application Note

\*Optimal dilutions/concentrations should be determined by the researcher.

| Suggested dilution | Recommended dilution |
|--------------------|----------------------|
| WB                 | 1:500-1:20000        |
| ICC/IF             | 1:100-1:1000         |
| IHC-P              | 1:100-1:1000         |

Not tested in other applications.

**Calculated MW** 33 kDa. ( [Note](#) )

## PROPERTIES

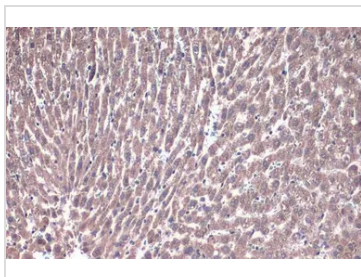
|                      |  |
|----------------------|--|
| <b>Form</b>          | Liquid   |
| <b>Buffer</b>        | PBS, 20% Glycerol  |
| <b>Preservative</b>  | 0.025% ProClin 300   |
| <b>Storage</b>       | Store as concentrated solution. Centrifuge briefly prior to opening vial. For short-term storage (1-2 weeks), store at 4°C. For long-term storage, aliquot and store at -20°C or below. Avoid multiple freeze-thaw cycles. |
| <b>Concentration</b> | 1.01 mg/ml (Please refer to the vial label for the specific concentration.)  |
| <b>Immunogen</b>     | Recombinant protein encompassing a sequence within the center region of human PEX19. The exact sequence is proprietary.  |
| <b>Purification</b>  | Purified by antigen-affinity chromatography.   |
| <b>Conjugation</b>   | Unconjugated   |

**Note** For laboratory research use only. Not for any clinical, therapeutic, or diagnostic use in humans or animals. Not for animal or human consumption.

Purchasers shall not, and agree not to enable third parties to, analyze, copy, reverse engineer or otherwise attempt to determine the structure or sequence of the product.



For full product information, images and publications, please visit our [website](#).

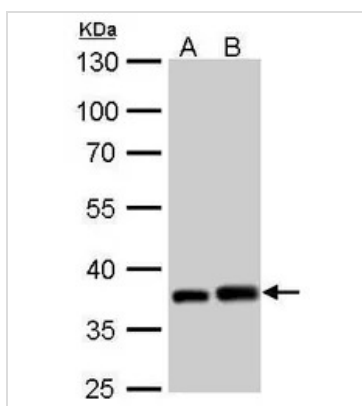
**DATA IMAGES**

**GTX110721 IHC-P Image**

PEX19 antibody detects PEX19 protein at cytoplasm by immunohistochemical analysis.

Sample: Paraffin-embedded rat liver.

PEX19 stained by PEX19 antibody (GTX110721) diluted at 1:1000.

Antigen Retrieval: Citrate buffer, pH 6.0, 15 min


**GTX110721 WB Image**

PEX19 antibody detects PEX19 protein by western blot analysis.

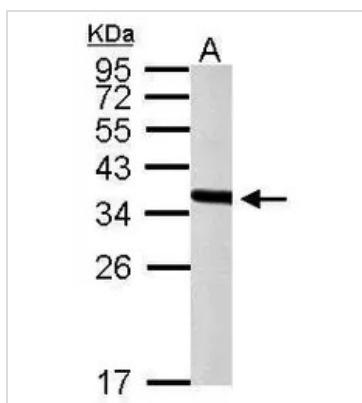
A. 30 µg PC-12 whole cell lysate/extract

B. 30 µg Rat-2 whole cell lysate/extract

10% SDS-PAGE

PEX19 antibody (GTX110721) dilution: 1:1000

The HRP-conjugated anti-rabbit IgG antibody (GTX213110-01) was used to detect the primary antibody.


**GTX110721 WB Image**

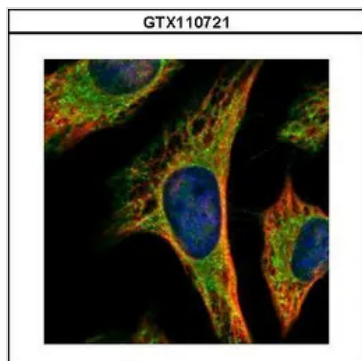
Sample (50 µg of whole cell lysate)

A: mouse liver

12% SDS PAGE

GTX110721 diluted at 1:10000

The HRP-conjugated anti-rabbit IgG antibody (GTX213110-01) was used to detect the primary antibody.


**GTX110721 ICC/IF Image**

Confocal immunofluorescence analysis (Olympus FV10i) of methanol-fixed HeLa, using PEX19(GTX110721) antibody (Green) at 1:500 dilution. Alpha-tubulin filaments were labeled with GTX11304 (Red) at 1:2000.



For full product information, images and publications, please visit our [website](https://www.genetex.com).