

# Hec1 antibody

**Cat. No. GTX110735**

|                     |            |
|---------------------|------------|
| <b>Host</b>         | Rabbit     |
| <b>Clonality</b>    | Polyclonal |
| <b>Isotype</b>      | IgG        |
| <b>Applications</b> | WB, IP     |
| <b>Reactivity</b>   | Human      |

[References \( 3 \)](#)

[Package](#)

100 µl, 25 µl

## Applications

### Application Note

\*Optimal dilutions/concentrations should be determined by the researcher.

| Suggested dilution | Recommended dilution |
|--------------------|----------------------|
| WB                 | 1:500-1:3000         |
| IP                 | Assay dependent      |

Not tested in other applications.

**Calculated MW** 74 kDa. ([Note](#))

## Properties

|                      |  |
|----------------------|--|
| <b>Form</b>          | Liquid   |
| <b>Buffer</b>        | 0.1M Tris, 0.1M Glycine, 10% Glycerol  |
| <b>Preservative</b>  | 0.01% Thimerosal   |
| <b>Storage</b>       | Store as concentrated solution. Centrifuge briefly prior to opening vial. For short-term storage (1-2 weeks), store at 4°C. For long-term storage, aliquot and store at -20°C or below. Avoid multiple freeze-thaw cycles. |
| <b>Concentration</b> | 0.46 mg/ml (Please refer to the vial label for the specific concentration.)  |
| <b>Immunogen</b>     | Recombinant protein corresponding to human HEC1.   |
| <b>Purification</b>  | Purified by antigen-affinity chromatography.   |
| <b>Conjugation</b>   | Unconjugated   |

### Note

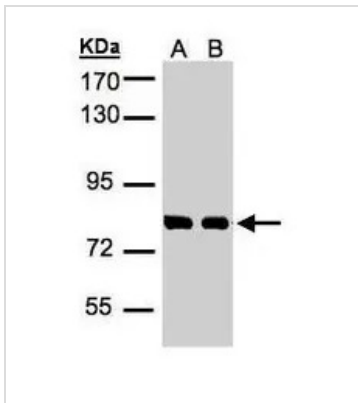
For laboratory research use only. Not for any clinical, therapeutic, or diagnostic use in humans or animals. Not for animal or human consumption.

Purchasers shall not, and agree not to enable third parties to, analyze, copy, reverse engineer or otherwise attempt to determine the structure or sequence of the product.



For full product information, images and publications, please visit our [website](#).

DATA IMAGES



**GTx110735 WB Image**

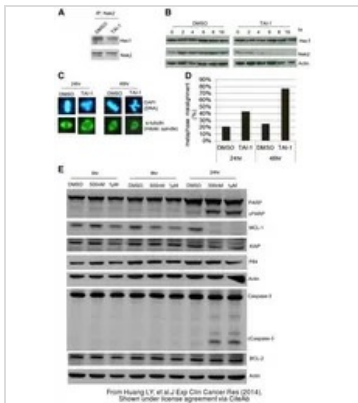
Sample

A: 30ug of A431 whole cell lysate (GTx27909)

B: 30ug of H1299 whole cell lysate

7.5% SDS PAGE

GTx110735 diluted at 1:1000



**GTx110735 WB Image**

The data was published in the journal J Exp Clin Cancer Res in 2014. [PMID: 24401611](https://pubmed.ncbi.nlm.nih.gov/24401611/)



For full product information, images and publications, please visit our [website](https://www.genetex.com).