

GST tag antibody

Cat. No. GTX110736

Host	Rabbit
Clonality	Polyclonal
Isotype	IgG
Applications	WB, IP, ELISA
Reactivity	Species independent

References (9)

Package

100 µl, 25 µl

Applications

Application Note

*Optimal dilutions/concentrations should be determined by the researcher.

Suggested dilution	Recommended dilution
WB	1:500-1:3000
IP	1:100-1:500
ELISA	Assay dependent

Not tested in other applications.

Properties

Form	Liquid
Buffer	0.1M Tris, 0.1M Glycine, 10% Glycerol
Preservative	0.01% Thimerosal
Storage	Store as concentrated solution. Centrifuge briefly prior to opening vial. For short-term storage (1-2 weeks), store at 4°C. For long-term storage, aliquot and store at -20°C or below. Avoid multiple freeze-thaw cycles.
Concentration	0.1 mg/ml (Please refer to the vial label for the specific concentration.)
Immunogen	The immunogen used to generate this antibody corresponds to GST
Purification	Purified by antigen-affinity chromatography.
Conjugation	Unconjugated

Note

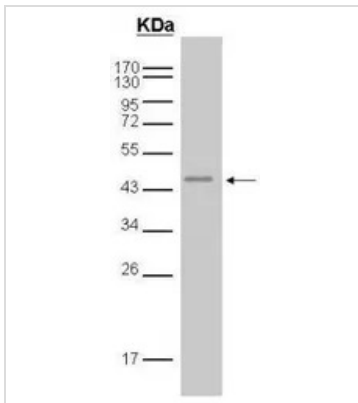
For laboratory research use only. Not for any clinical, therapeutic, or diagnostic use in humans or animals. Not for animal or human consumption.

Purchasers shall not, and agree not to enable third parties to, analyze, copy, reverse engineer or otherwise attempt to determine the structure or sequence of the product.



For full product information, images and publications, please visit our [website](#).

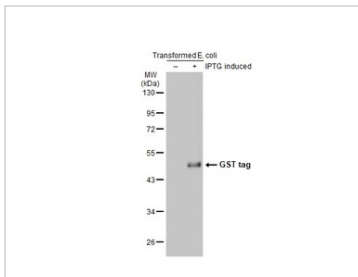
DATA IMAGES



GTX110736 IP Image

GST-tagged protein (Mw: 45 kDa) was immunoprecipitated from E. coli lysate using 8 ug of anti-GST antibody (GTX110736).

The precipitated protein was detected by GTX110736 diluted at 1:3000.



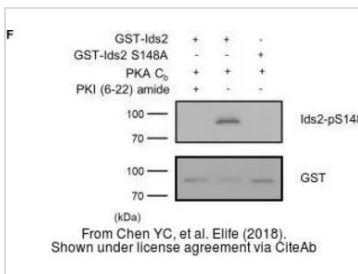
GTX110736 WB Image

IPTG-induced cell lysate from E. coli expressing GST-tag tagged proteins were separated by 10% SDS-PAGE, and the membrane was blotted with GST tag antibody (GTX110736) diluted at 1:1000. The HRP-conjugated anti-rabbit IgG antibody (GTX213110-01) was used to detect the primary antibody.



GTX110736 WB Image

The data was published in the journal BMC Biol in 2017. [PMID: 29183317](https://pubmed.ncbi.nlm.nih.gov/29183317/)



GTX110736 WB Image

The data was published in the journal Elife in 2018. [PMID: 30516470](https://pubmed.ncbi.nlm.nih.gov/30516470/)



For full product information, images and publications, please visit our [website](https://www.genetex.com).