

ALDH1A3 antibody [N2C2], Internal

Cat. No. GTX110784

Host	Rabbit
Clonality	Polyclonal
Isotype	IgG
Applications	WB, ICC/IF, IHC-P
Reactivity	Human, Mouse, Rat

References (3)

Package

100 µl, 25 µl

Applications

Application Note

*Optimal dilutions/concentrations should be determined by the researcher.

Suggested dilution	Recommended dilution
WB	1:500-1:3000
ICC/IF	1:100-1:1000
IHC-P	1:100-1:1000

Not tested in other applications.

Calculated MW 56 kDa. ([Note](#))

Properties

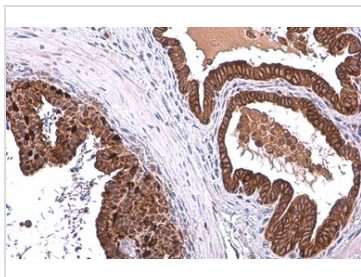
Form	Liquid
Buffer	PBS, 1% BSA, 20% Glycerol
Preservative	0.025% ProClin 300
Storage	Store as concentrated solution. Centrifuge briefly prior to opening vial. For short-term storage (1-2 weeks), store at 4°C. For long-term storage, aliquot and store at -20°C or below. Avoid multiple freeze-thaw cycles.
Concentration	0.1 mg/ml (Please refer to the vial label for the specific concentration.)
Immunogen	Recombinant protein encompassing a sequence within the center region of human ALDH1A3. The exact sequence is proprietary.
Purification	Purified by antigen-affinity chromatography.
Conjugation	Unconjugated

Note

For laboratory research use only. Not for any clinical, therapeutic, or diagnostic use in humans or animals. Not for animal or human consumption.

Purchasers shall not, and agree not to enable third parties to, analyze, copy, reverse engineer or otherwise attempt to determine the structure or sequence of the product.

For full product information, images and publications, please visit our [website](#).

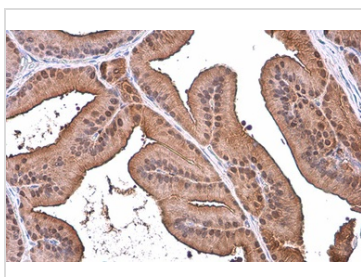
DATA IMAGES

GTX110784 IHC-P Image

ALDH1A3 antibody [N2C2], Internal detects ALDH1A3 protein at cytoplasm by immunohistochemical analysis.

Sample: Paraffin-embedded mouse prostate.

ALDH1A3 stained by ALDH1A3 antibody [N2C2], Internal (GTX110784) diluted at 1:500.

Antigen Retrieval: Citrate buffer, pH 6.0, 15 min

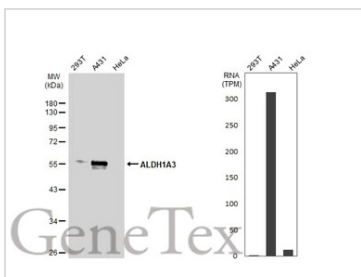

GTX110784 IHC-P Image

ALDH1A3 antibody [N2C2], Internal detects ALDH1A3 protein at cytoplasm by immunohistochemical analysis.

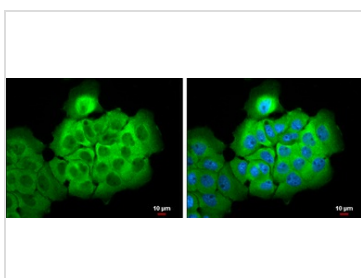
Sample: Paraffin-embedded rat prostate.

ALDH1A3 stained by ALDH1A3 antibody [N2C2], Internal (GTX110784) diluted at 1:500.

Antigen Retrieval: Citrate buffer, pH 6.0, 15 min


GTX110784 WB Image

Various whole cell extracts (30 µg) were separated by 10% SDS-PAGE, and the membrane was blotted with ALDH1A3 antibody [N2C2], Internal (GTX110784) diluted at 1:500. The HRP-conjugated anti-rabbit IgG antibody (GTX213110-01) was used to detect the primary antibody. Corresponding RNA expression data for the same cell lines are based on Human Protein Atlas program.


GTX110784 ICC/IF Image

ALDH1A3 antibody [N2C2], Internal detects ALDH1A3 protein at cytoplasm by immunofluorescent analysis.

Sample: A431 cells were fixed in 4% paraformaldehyde at RT for 15 min.

Green: ALDH1A3 stained by ALDH1A3 antibody [N2C2], Internal (GTX110784) diluted at 1:500.

Blue: Hoechst 33342 staining.

Scale bar= 10µm.



For full product information, images and publications, please visit our [website](https://www.genetex.com).