

## Myosin skeletal slow antibody [NOQ7.5.4D]

Cat. No. GTX11083

<b>Host</b>	Mouse
<b>Clonality</b>	Monoclonal
<b>Isotype</b>	IgG1
<b>Applications</b>	WB, IHC-P, IHC-Fr, ELISA, EM, IHC, RIA
<b>Reactivity</b>	Human, Mouse, Rat, Rabbit, Goat, Sheep, Bovine, Cat, Dog, Hamster, Chicken, Guinea pig, Pig

References ( 5 )

Package

100 µl

## Applications

## Application Note

\*Optimal dilutions/concentrations should be determined by the researcher.

Suggested dilution	Recommended dilution
WB	1:5,000
IHC-P	1:4,000
IHC-Fr	Assay dependent
ELISA	Assay dependent
EM	Assay dependent
IHC	Assay dependent
RIA	Assay dependent

Not tested in other applications.

Calculated MW 223 kDa. ( [Note](#) )

## Product Note

Monoclonal Anti-Myosin (Skeletal, Slow) recognizes an epitope located on the heavy meromyosin portion of human adult skeletal muscle slow myosin. Cross-reactivity has been observed with human, bovine, sheep, goat, porcine, dog, cat, rabbit, hamster, guinea pig, rat, mouse, and chicken. In rat, the product is highly specific for the slow myosin heavy chain of adult skeletal muscle. It does not react with the fast myosin heavy chain. It does not cross-react with embryonic or neonatal rat skeletal myosins, nor with cat fetal/embryonic skeletal myosin. Using immunohistochemical staining, the antibody reacts with human adult type I skeletal muscle fibers and with cardiac muscle cells. It also reacts faintly with adult human C-Fibers, co-expressing myosin heavy chain I and IIa in variable ratios. The product shows no reactivity with human or rat adult smooth muscle or with non-muscle tissues.

## Properties

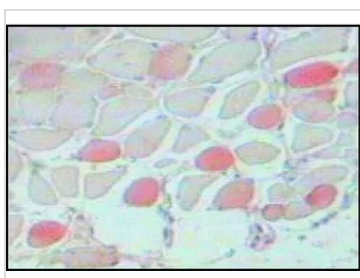
<b>Form</b>	Liquid
<b>Buffer</b>	Ascites
<b>Preservative</b>	15mM Sodium azide



For full product information, images and publications, please visit our [website](#).

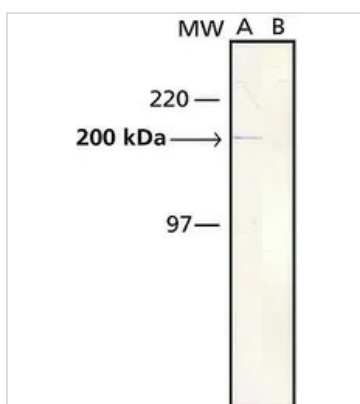
<b>Storage</b>	Store as concentrated solution. Centrifuge briefly prior to opening vial. For short-term storage (1-2 weeks), store at 4°C. For long-term storage, aliquot and store at -20°C or below. Avoid multiple freeze-thaw cycles.
<b>Immunogen</b>	human skeletal muscle myosin purified from myofibrils.
<b>Purification</b>	Unpurified
<b>Conjugation</b>	Unconjugated
<b>Note</b>	<p>For laboratory research use only. Not for any clinical, therapeutic, or diagnostic use in humans or animals. Not for animal or human consumption.</p> <p>Purchasers shall not, and agree not to enable third parties to, analyze, copy, reverse engineer or otherwise attempt to determine the structure or sequence of the product.</p>

## DATA IMAGES



**GTX11083 IHC-P Image**

IHC-P analysis of rabbit tongue tissue using GTX11083 Myosin skeletal slow antibody [NOQ7.5.4D] at 1:4,000.



**GTX11083 WB Image**

WB analysis of rabbit tongue extract using GTX11083 Myosin skeletal slow antibody [NOQ7.5.4D].

Lane A: Antibody dilution 1:5,000

Lane B: Secondary antibody only



For full product information, images and publications, please visit our [website](https://www.genetex.com).