

CD3 epsilon antibody [CD3-12]

Cat. No. GTX11089

Host	Rat
Clonality	Monoclonal
Isotype	IgG1
Application	WB, ICC/IF, IHC-P, IHC-Fr, FACS
Reactivity	Human, Mouse, Rabbit, Bovine, Cat, Dog, Chicken, Pig, Alpaca, Amazon Parrot, Bullfrog, Cynomolgus monkey, Duck, Great horned owl (Bubo virginianus), Harbour Porpoise, Horse, Koala, Raccoon, Rhesus Monkey, Sea Lion, Spotted Hyena, Xenopus

[Reference \(12 \)](#)

Package

100 µg

PRODUCT

Summary Rat monoclonal [CD3 - 12] to CD3

APPLICATION

Application Note

*Optimal dilutions/concentrations should be determined by the researcher.

Suggested dilution	Recommended dilution
WB	Assay dependent
ICC/IF	Assay dependent
IHC-P	Assay dependent
IHC-Fr	Assay dependent
FACS	Assay dependent

Not tested in other applications.

Calculated MW 23 kDa. ([Note](#))

Product Note This antibody has been specifically raised against an epitope within the epsilon peptide chain, highly conserved among species clone CD3-12 has a very broad species crossreactivity for the CD3 marker.

PROPERTIES

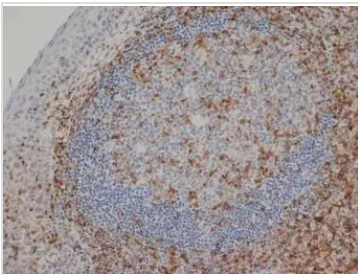
Form	Liquid
Buffer	PBS
Preservative	0.09% Sodium azide
Storage	Store as concentrated solution. Centrifuge briefly prior to opening vial. For short-term storage (1-2 weeks), store at 4°C. For long-term storage, aliquot and store at -20°C or below. Avoid multiple freeze-thaw cycles.
Concentration	1 mg/ml (Please refer to the vial label for the specific concentration.)



For full product information, images and publications, please visit our [website](#).

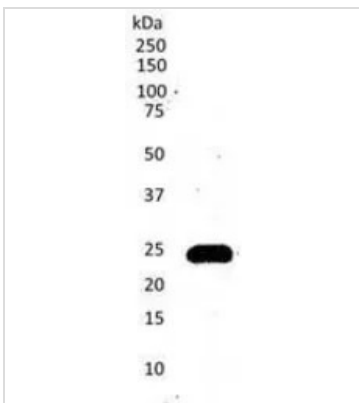
Immunogen	Synthetic peptide sequence derived from cytoplasmic epitope of CD3 (Glu-Arg-Pro-Pro-Pro-Val-Pro-Asn-Pro-Asp-Tyr-Glu-Pro-Cys) (ERPPVPNPDIYEPD)
Purification	Protein G purified From tissue culture supernatant
Conjugation	Unconjugated
Note	For laboratory research use only. Not for any clinical, therapeutic, or diagnostic use in humans or animals. Not for animal or human consumption. Purchasers shall not, and agree not to enable third parties to, analyze, copy, reverse engineer or otherwise attempt to determine the structure or sequence of the product.

DATA IMAGES



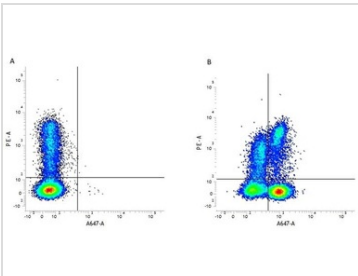
GTX11089 IHC-P Image

IHC-P analysis of human tonsil tissue using GTX11089 CD3 antibody [CD3-12].
Heat mediated antigen retrieval using EDTA buffer pH9.0.



GTX11089 WB Image

WB analysis of Jurkat cell lysate using GTX11089 CD3 antibody [CD3-12].



GTX11089 FACS Image

FACS analysis of red cell lysed human peripheral blood gated on leukocytes using GTX11089 CD3 antibody [CD3-12].

Figure A : RPE conjugated Mouse anti Human CD8 and Alexa Fluor 647 conjugated Rat IgG1 isotype control.

Figure B : RPE conjugated Mouse anti Human CD8 and Alexa Fluor 647 conjugated Rat anti Human CD3 (GTX11089).



For full product information, images and publications, please visit our [website](https://www.genetex.com).