

MYO5A antibody

Cat. No. GTX11094

Host	Rabbit
Clonality	Polyclonal
Isotype	IgG
Applications	WB, IHC-P
Reactivity	Rat, Chicken

References (1)

Package

100 µl

Applications

Application Note

*Optimal dilutions/concentrations should be determined by the researcher.

Suggested dilution	Recommended dilution
WB	1:1,000
IHC-P	1:200

Not tested in other applications.

Calculated MW 212 kDa. ([Note](#))

Properties

Form	Liquid
Buffer	PBS
Preservative	0.02% Sodium azide
Storage	Store as concentrated solution. Centrifuge briefly prior to opening vial. For short-term storage (1-2 weeks), store at 4°C. For long-term storage, aliquot and store at -20°C or below. Avoid multiple freeze-thaw cycles.
Concentration	~0.4 mg/ml (Please refer to the vial label for the specific concentration.)
Immunogen	synthetic peptide located near the C-terminus of chicken myosin Va (amino acids 1782-1799 with N-terminally added lysine) conjugated to KLH. This sequence is identical in human, mouse and rat.
Purification	Purified by affinity chromatography
Conjugation	Unconjugated

Note

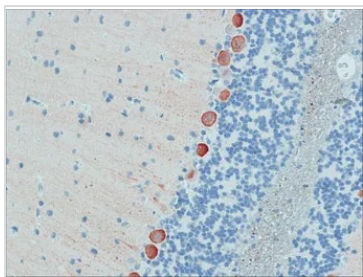
For laboratory research use only. Not for any clinical, therapeutic, or diagnostic use in humans or animals. Not for animal or human consumption.

Purchasers shall not, and agree not to enable third parties to, analyze, copy, reverse engineer or otherwise attempt to determine the structure or sequence of the product.



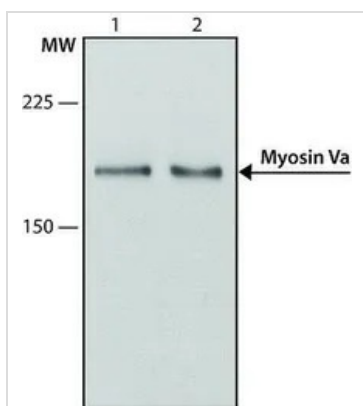
For full product information, images and publications, please visit our [website](#).

DATA IMAGES



GTX11094 IHC-P Image

IHC-P analysis of rat cerebellum section using GTX11094 MYO5A antibody at 1:200.



GTX11094 WB Image

WB analysis of (1) rat brain, (2) C2C12 lysate using GTX11094 MYO5A antibody at 1:1,000.



For full product information, images and publications, please visit our [website](#).