

MYO6 antibody [MUD-19]

Cat. No. GTX11095

Host	Mouse
Clonality	Monoclonal
Isotype	IgG1
Applications	WB, IP, ELISA, IHC
Reactivity	Human, Mouse, Rat

References (1)

Package

50 µl

Applications

Application Note

*Optimal dilutions/concentrations should be determined by the researcher.

Suggested dilution	Recommended dilution
WB	2 µg/ml
IP	Assay dependent
ELISA	Assay dependent
IHC	Assay dependent

Not tested in other applications.

Calculated MW 150 kDa. ([Note](#))

Properties

Form	Liquid
Buffer	PBS, 1% BSA
Preservative	15mM Sodium azide
Storage	Store as concentrated solution. Centrifuge briefly prior to opening vial. For short-term storage (1-2 weeks), store at 4°C. For long-term storage, aliquot and store at -20°C or below. Avoid multiple freeze-thaw cycles.
Concentration	~1 mg/ml (Please refer to the vial label for the specific concentration.)
Immunogen	synthetic peptide corresponding to amino acids 291-302 of human myosin VI.
Purification	Purified immunoglobulin
Conjugation	Unconjugated

Note

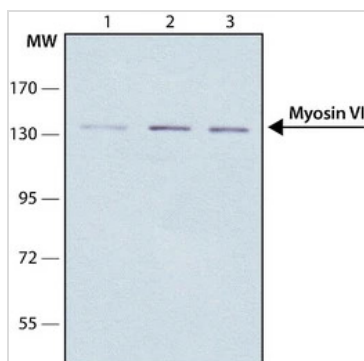
For laboratory research use only. Not for any clinical, therapeutic, or diagnostic use in humans or animals. Not for animal or human consumption.

Purchasers shall not, and agree not to enable third parties to, analyze, copy, reverse engineer or otherwise attempt to determine the structure or sequence of the product.



For full product information, images and publications, please visit our [website](#).

DATA IMAGES



GTX11095 WB Image

WB analysis of various tissue lysates using GTX11095 MYO6 antibody [MUD-19].

Dilution : 0.5 µg/mL

Lane 1: A431

Lane 2: MCF-7

Lane 3: MDA-MB-231



For full product information, images and publications, please visit our [website](https://www.genetex.com).