

MYO6 antibody

Cat. No. GTX11096

Host	Rabbit
Clonality	Polyclonal
Isotype	IgG
Applications	WB, ICC/IF
Reactivity	Rat, Dog

Package
100 µl

Applications

Application Note

*Optimal dilutions/concentrations should be determined by the researcher.

Suggested dilution	Recommended dilution
WB	1:1,000
ICC/IF	1:75

Note : using 0.5% paraformaldehyde fixed/0.5% Triton X-100 treated rat skeletal muscle

Not tested in other applications.

Calculated MW 150 kDa. ([Note](#))

Properties

Form	Liquid
Buffer	PBS, 1% BSA
Preservative	15mM Sodium azide
Storage	Store as concentrated solution. Centrifuge briefly prior to opening vial. For short-term storage (1-2 weeks), store at 4°C. For long-term storage, aliquot and store at -20°C or below. Avoid multiple freeze-thaw cycles.
Concentration	Batch dependent (Please refer to the vial label for the specific concentration.)
Immunogen	synthetic peptide corresponding to an epitope within the C-terminal of human Myosin VI, with N-terminal cysteine added, conjugated to KLH.
Purification	Purified by affinity chromatography
Conjugation	Unconjugated

Note

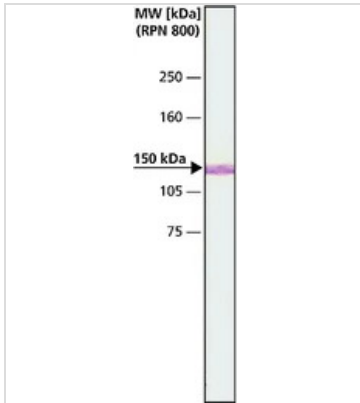
For laboratory research use only. Not for any clinical, therapeutic, or diagnostic use in humans or animals. Not for animal or human consumption.

Purchasers shall not, and agree not to enable third parties to, analyze, copy, reverse engineer or otherwise attempt to determine the structure or sequence of the product.



For full product information, images and publications, please visit our [website](#).

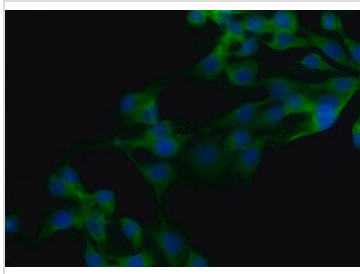
DATA IMAGES



GTX11096 WB Image

WB analysis of MDCK cell lysates using GTX11096 MYO6 antibody.

Dilution : 1:2000



GTX11096 ICC/IF Image

ICC/IF analysis of Rat NRK cells using GTX11096 MYO6 antibody.

Green : Primary antibody

Blue : DAPI

Dilution : 1:75



For full product information, images and publications, please visit our [website](#).