

Paxillin antibody [PXC-10]

Cat. No. GTX11101

Host	Mouse
Clonality	Monoclonal
Isotype	IgG1
Applications	WB, ICC/IF
Reactivity	Human, Mouse, Rat, Bovine, Hamster, Chicken

Package
100 µl

Applications

Application Note

*Optimal dilutions/concentrations should be determined by the researcher.

Suggested dilution	Recommended dilution
WB	1:500
ICC/IF	Assay dependent

Not tested in other applications.

Calculated MW	61 kDa. (Note)
Product Note	Recognizes an epitope located in the LIM1 domain of the paxillin molecule.

Properties

Form	Liquid
Buffer	Ascites
Preservative	15mM Sodium azide
Storage	Store as concentrated solution. Centrifuge briefly prior to opening vial. For short-term storage (1-2 weeks), store at 4°C. For long-term storage, aliquot and store at -20°C or below. Avoid multiple freeze-thaw cycles.
Immunogen	C-terminal part of recombinant chicken paxillin (amino acids 305-559)
Purification	Unpurified
Conjugation	Unconjugated

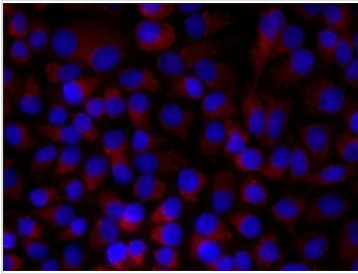
Note

For laboratory research use only. Not for any clinical, therapeutic, or diagnostic use in humans or animals. Not for animal or human consumption.

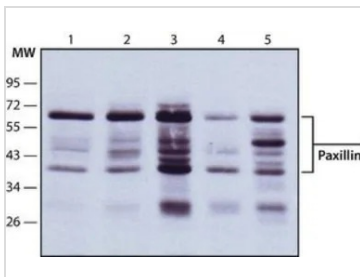
Purchasers shall not, and agree not to enable third parties to, analyze, copy, reverse engineer or otherwise attempt to determine the structure or sequence of the product.



For full product information, images and publications, please visit our [website](#).

DATA IMAGES

GTX11101 ICC/IF Image

ICC/IF analysis of HeLa cells using GTX11101 Paxillin antibody[PXC-10] at 1:200 (red). Cells were fixed and permeabilized with 4% PFA followed by 0.5% Triton X-100.


GTX11101 WB Image

WB analysis of (1) HEK-293T (2) HeLa (3) A431 (4) JURKAT (5) NIH-3T3 cell lysate using GTX11101 Paxillin antibody [PXC-10] at 1:500.



For full product information, images and publications, please visit our [website](https://www.genetex.com).