

# Calcineurin A antibody

**Cat. No. GTX111039**

<b>Host</b>	Rabbit
<b>Clonality</b>	Polyclonal
<b>Isotype</b>	IgG
<b>Applications</b>	WB, ICC/IF
<b>Reactivity</b>	Human, Mouse, Rat, Frog, Squirrel

References ( 4 )

★★★★★ Review ( 1 )

Package

100 µl, 25 µl

## Applications

### Application Note

\*Optimal dilutions/concentrations should be determined by the researcher.

Suggested dilution	Recommended dilution
WB	1:500-1:10000
ICC/IF	1:100-1:1000

Not tested in other applications.

**Calculated MW** 59 kDa. ( [Note](#) )

## Properties

<b>Form</b>	Liquid
<b>Buffer</b>	0.1M Tris, 0.1M Glycine, 20% Glycerol
<b>Preservative</b>	0.01% Thimerosal
<b>Storage</b>	Store as concentrated solution. Centrifuge briefly prior to opening vial. For short-term storage (1-2 weeks), store at 4°C. For long-term storage, aliquot and store at -20°C or below. Avoid multiple freeze-thaw cycles.
<b>Concentration</b>	0.98 mg/ml (Please refer to the vial label for the specific concentration.)
<b>Immunogen</b>	Recombinant protein encompassing a sequence within the center region of human Calcineurin A. The exact sequence is proprietary.
<b>Purification</b>	Purified by antigen-affinity chromatography.
<b>Conjugation</b>	Unconjugated

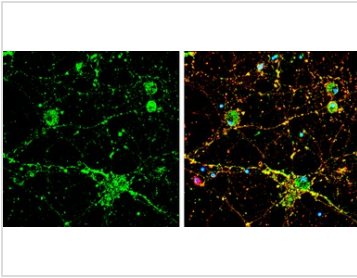
### Note

For laboratory research use only. Not for any clinical, therapeutic, or diagnostic use in humans or animals. Not for animal or human consumption.

Purchasers shall not, and agree not to enable third parties to, analyze, copy, reverse engineer or otherwise attempt to determine the structure or sequence of the product.



For full product information, images and publications, please visit our [website](#).

**DATA IMAGES**

**GTXT111039 ICC/IF Image**

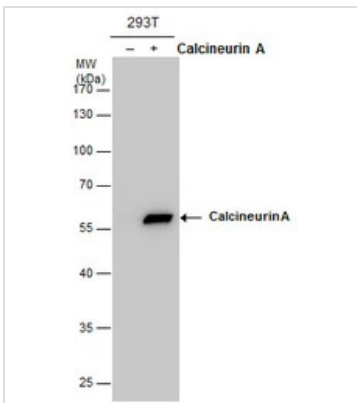
Calcineurin A antibody detects Calcineurin A protein by immunofluorescent analysis.

Sample: DIV9 rat E18 primary cortical neuron cells were fixed in 4% paraformaldehyde at RT for 15 min.

Green: Calcineurin A stained by Calcineurin A antibody (GTXT111039) diluted at 1:500.

Red: beta Tubulin 3/ Tuj1, stained by beta Tubulin 3/ Tuj1 antibody [GT1338] (GTXT631831) diluted at 1:500.

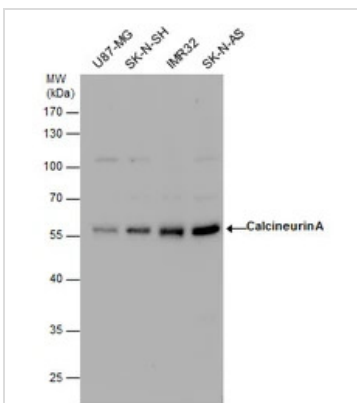
Blue: Fluoroshield with DAPI (GTXT30920).


**GTXT111039 WB Image**

Calcineurin A antibody detects Calcineurin A protein by western blot analysis. Non-transfected (-) and

Calcineurin A-transfected (+, ) 293T whole cell extracts (30 µg) were separated by 10% SDS-PAGE, and the

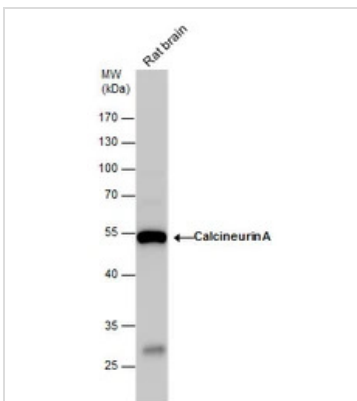
membrane was blotted with Calcineurin A antibody (GTXT111039) at a dilution of 1:5000.


**GTXT111039 WB Image**

Calcineurin A antibody detects Calcineurin A protein by western blot analysis. Various whole cell extracts (30

µg) were separated by 10% SDS-PAGE, and the membrane was blotted with Calcineurin A antibody

(GTXT111039) diluted by 1:3000.


**GTXT111039 WB Image**

Calcineurin A antibody detects Calcineurin A protein by western blot analysis. Rat tissue extracts (50 µg) was

separated by 10 % SDS-PAGE, and the membrane was blotted with Calcineurin A antibody (GTXT111039)

diluted by 1:3000.



For full product information, images and publications, please visit our [website](https://www.genetex.com).