

## PLZF antibody [N1N3]

Cat. No. GTX111046

Host	Rabbit
Clonality	Polyclonal
Isotype	IgG
Applications	WB, ICC/IF, IHC-Fr
Reactivity	Human, Chicken

References ( 1 )

Package

100 µl, 25 µl

## Applications

## Application Note

\*Optimal dilutions/concentrations should be determined by the researcher.

Suggested dilution	Recommended dilution
WB	1:500-1:3000
ICC/IF	1:100-1:2000
IHC-Fr	Assay dependent

Not tested in other applications.

Calculated MW 74 kDa. ( [Note](#) )

## Properties

Form	Liquid
Buffer	PBS, 1% BSA, 20% Glycerol
Preservative	0.025% ProClin 300
Storage	Store as concentrated solution. Centrifuge briefly prior to opening vial. For short-term storage (1-2 weeks), store at 4°C. For long-term storage, aliquot and store at -20°C or below. Avoid multiple freeze-thaw cycles.
Concentration	0.22 mg/ml (Please refer to the vial label for the specific concentration.)
Immunogen	Recombinant protein encompassing a sequence within the center region of human PLZF. The exact sequence is proprietary.
Purification	Purified by antigen-affinity chromatography.
Conjugation	Unconjugated

## Note

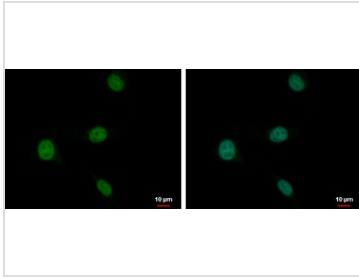
For laboratory research use only. Not for any clinical, therapeutic, or diagnostic use in humans or animals. Not for animal or human consumption.

Purchasers shall not, and agree not to enable third parties to, analyze, copy, reverse engineer or otherwise attempt to determine the structure or sequence of the product.



For full product information, images and publications, please visit our [website](#).

## DATA IMAGES



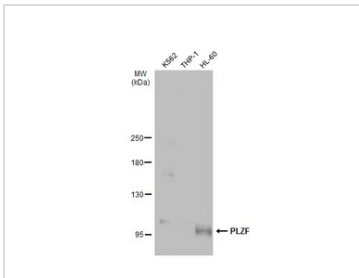
### GTX111046 ICC/IF Image

PLZF antibody [N1N3] detects PLZF protein at nucleus by immunofluorescent analysis.

Sample: U87-MG cells were fixed in 4% paraformaldehyde at RT for 15 min.

Green: PLZF protein stained by PLZF antibody [N1N3] (GTX111046) diluted at 1:2000.

Blue: Hoechst 33342 staining.



### GTX111046 WB Image

Various whole cell extracts (30 μg) were separated by 5% SDS-PAGE, and the membrane was blotted with PLZF antibody [N1N3] (GTX111046) diluted at 1:500. The HRP-conjugated anti-rabbit IgG antibody (GTX213110-01) was used to detect the primary antibody.

The observed M.W. is based on the publication: [PMID: 30410445](https://pubmed.ncbi.nlm.nih.gov/30410445/)



For full product information, images and publications, please visit our [website](https://www.genetex.com).