

## PI3 kinase p85 alpha antibody [N2C1], Internal

Cat. No. GTX111068

Host	Rabbit
Clonality	Polyclonal
Isotype	IgG
Applications	WB, IHC-P, IP
Reactivity	Human, Mouse, Rat

References ( 11 )

Package

100 µl, 25 µl

## Applications

## Application Note

\*Optimal dilutions/concentrations should be determined by the researcher.

Suggested dilution	Recommended dilution
WB	1:500-1:3000
IHC-P	1:100-1:1000
IP	1:100-1:500

Not tested in other applications.

Calculated MW 84 kDa. ( [Note](#) )

## Properties

Form	Liquid
Buffer	PBS, 20% Glycerol
Preservative	0.025% ProClin 300
Storage	Store as concentrated solution. Centrifuge briefly prior to opening vial. For short-term storage (1-2 weeks), store at 4°C. For long-term storage, aliquot and store at -20°C or below. Avoid multiple freeze-thaw cycles.
Concentration	1.46 mg/ml (Please refer to the vial label for the specific concentration.)
Immunogen	Recombinant protein encompassing a sequence within the center region of human PI3 kinase p85 alpha. The exact sequence is proprietary.
Purification	Purified by antigen-affinity chromatography.
Conjugation	Unconjugated

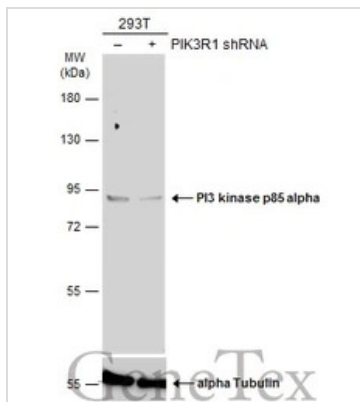
## Note

For laboratory research use only. Not for any clinical, therapeutic, or diagnostic use in humans or animals. Not for animal or human consumption.

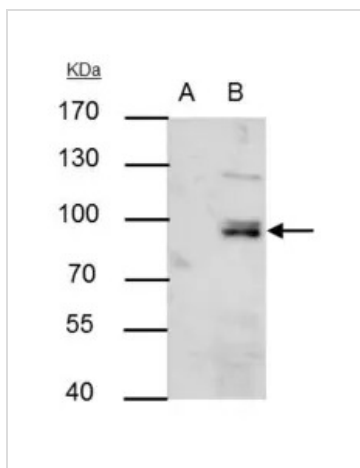
Purchasers shall not, and agree not to enable third parties to, analyze, copy, reverse engineer or otherwise attempt to determine the structure or sequence of the product.



For full product information, images and publications, please visit our [website](#).

**DATA IMAGES**

**GTX111068 WB Image**

Non-transfected (–) and transfected (+) 293T whole cell extracts (50 µg) were separated by 7.5% SDS-PAGE, and the membrane was blotted with PI3 kinase p85 alpha antibody [N2C1], Internal (GTX111068) diluted at 1:1000. The HRP-conjugated anti-rabbit IgG antibody (GTX213110-01) was used to detect the primary antibody.


**GTX111068 IP Image**

PI3 kinase p85 alpha antibody [N2C1], Internal immunoprecipitates PI3 kinase p85 alpha protein in IP experiments.

IP samples: Jurkat whole cell extract

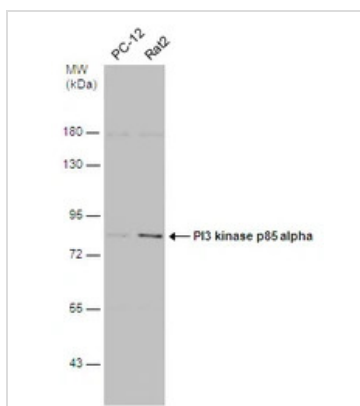
A. Control with 5 µg of preimmune Rabbit IgG

B. Immunoprecipitation of PI3 kinase p85 alpha protein by 5 µg PI3 kinase p85 alpha antibody [N2C1], Internal (GTX111068)

10 % SDS-PAGE

The immunoprecipitated PI3 kinase p85 alpha protein was detected by PI3 kinase p85 alpha antibody [N2C1], Internal (GTX111068) diluted at 1:500.

[EasyBlot anti-rabbit IgG (GTX221666-01) was used as a secondary reagent]


**GTX111068 WB Image**

Various whole cell extracts (30 µg) were separated by 7.5% SDS-PAGE, and the membrane was blotted with PI3 kinase p85 alpha antibody [N2C1], Internal (GTX111068) diluted at 1:1000. The HRP-conjugated anti-rabbit IgG antibody (GTX213110-01) was used to detect the primary antibody.



For full product information, images and publications, please visit our [website](https://www.genetex.com).