

HSC70 antibody [N2C1], Internal

Cat. No. GTX111069

| | |
|---------------------|-------------------|
| Host | Rabbit |
| Clonality | Polyclonal |
| Isotype | IgG |
| Applications | WB, ICC/IF, IHC-P |
| Reactivity | Human, Mouse |

References (3)

Package

100 µl, 25 µl

Applications

Application Note

*Optimal dilutions/concentrations should be determined by the researcher.

| Suggested dilution | Recommended dilution |
|--------------------|----------------------|
| WB | 1:500-1:3000 |
| ICC/IF | 1:100-1:1000 |
| IHC-P | 1:100-1:1000 |

Not tested in other applications.

Calculated MW 71 kDa. ([Note](#))

Properties

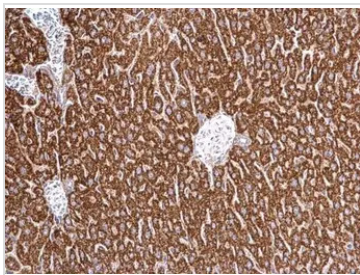
| | |
|----------------------|--|
| Form | Liquid |
| Buffer | PBS, 20% Glycerol |
| Preservative | 0.01% Thimerosal |
| Storage | Store as concentrated solution. Centrifuge briefly prior to opening vial. For short-term storage (1-2 weeks), store at 4°C. For long-term storage, aliquot and store at -20°C or below. Avoid multiple freeze-thaw cycles. |
| Concentration | 1 mg/ml (Please refer to the vial label for the specific concentration.) |
| Immunogen | Recombinant protein encompassing a sequence within the center region of human HSC70. The exact sequence is proprietary. |
| Purification | Purified by antigen-affinity chromatography. |
| Conjugation | Unconjugated |

Note

For laboratory research use only. Not for any clinical, therapeutic, or diagnostic use in humans or animals. Not for animal or human consumption.

Purchasers shall not, and agree not to enable third parties to, analyze, copy, reverse engineer or otherwise attempt to determine the structure or sequence of the product.

For full product information, images and publications, please visit our [website](#).

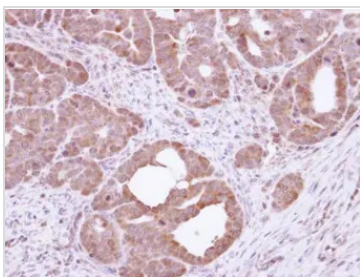
DATA IMAGES

GTx111069 IHC-P Image

HSC70 antibody detects HSC70 protein at cytosol on mouse prostate by immunohistochemical analysis.

Sample: Paraffin-embedded mouse prostate.

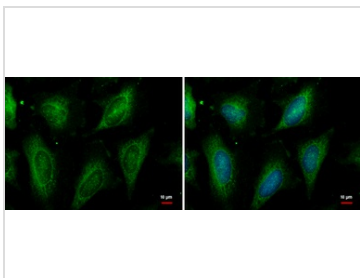
HSC70 antibody (GTx111069) dilution: 1:500.

Antigen Retrieval: Trilogy™ (EDTA based, pH 8.0) buffer, 15min


GTx111069 IHC-P Image

Immunohistochemical analysis of paraffin-embedded NCIN87 xenograft, using HSC70(GTx111069) antibody at 1:100 dilution.

Antigen Retrieval: Trilogy™ (EDTA based, pH 8.0) buffer, 15min

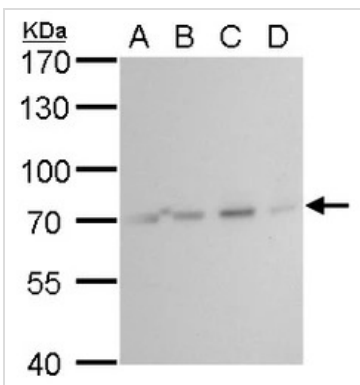

GTx111069 ICC/IF Image

HSC70 antibody detects HSC70 protein at cytoplasm by immunofluorescent analysis.

Sample: HeLa cells were fixed in ice-cold MeOH for 5 min.

Green: HSC70 protein stained by HSC70 antibody (GTx111069) diluted at 1:500.

Blue: Hoechst 33342 staining.


GTx111069 WB Image

Hsc70 antibody detects Hsc70 protein by Western blot analysis.

A. 30 µg 293T whole cell lysate/extract

B. 30 µg A431 whole cell lysate/extract

C. 30 µg HeLa whole cell lysate/extract

D. 30 µg HepG2 whole cell lysate/extract

7.5 % SDS-PAGE

Hsc70 antibody (GTx111069) dilution: 1:5000



For full product information, images and publications, please visit our [website](http://www.genetex.com).