

## HSC70 antibody [N2C1], Internal

Cat. No. GTX111069

Host	Rabbit
Clonality	Polyclonal
Isotype	IgG
Applications	WB, ICC/IF, IHC-P
Reactivity	Human, Mouse

References ( 3 )

Package

100 µl, 25 µl

## Applications

## Application Note

\*Optimal dilutions/concentrations should be determined by the researcher.

Suggested dilution	Recommended dilution
WB	1:500-1:3000
ICC/IF	1:100-1:1000
IHC-P	1:100-1:1000

Not tested in other applications.

Calculated MW 71 kDa. ( [Note](#) )

## Properties

Form	Liquid
Buffer	PBS, 20% Glycerol
Preservative	0.01% Thimerosal
Storage	Store as concentrated solution. Centrifuge briefly prior to opening vial. For short-term storage (1-2 weeks), store at 4°C. For long-term storage, aliquot and store at -20°C or below. Avoid multiple freeze-thaw cycles.
Concentration	1 mg/ml (Please refer to the vial label for the specific concentration.)
Immunogen	Recombinant protein encompassing a sequence within the center region of human HSC70. The exact sequence is proprietary.
Purification	Purified by antigen-affinity chromatography.
Conjugation	Unconjugated

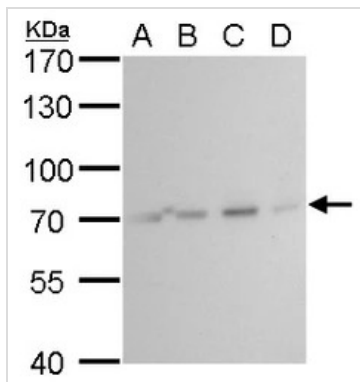
## Note

For laboratory research use only. Not for any clinical, therapeutic, or diagnostic use in humans or animals. Not for animal or human consumption.

Purchasers shall not, and agree not to enable third parties to, analyze, copy, reverse engineer or otherwise attempt to determine the structure or sequence of the product.



For full product information, images and publications, please visit our [website](#).

**DATA IMAGES**

**GTX111069 WB Image**

Hsc70 antibody detects Hsc70 protein by Western blot analysis.

A. 30 µg 293T whole cell lysate/extract

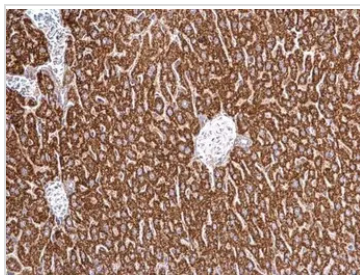
B. 30 µg A431 whole cell lysate/extract

C. 30 µg HeLa whole cell lysate/extract

D. 30 µg HepG2 whole cell lysate/extract

7.5 % SDS-PAGE

Hsc70 antibody (GTX111069) dilution: 1:5000

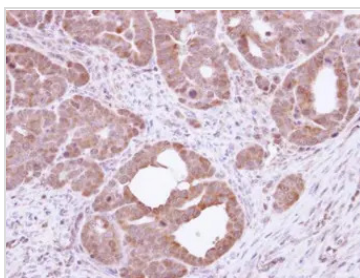

**GTX111069 IHC-P Image**

HSC70 antibody detects HSC70 protein at cytosol on mouse prostate by immunohistochemical analysis.

Sample: Paraffin-embedded mouse prostate.

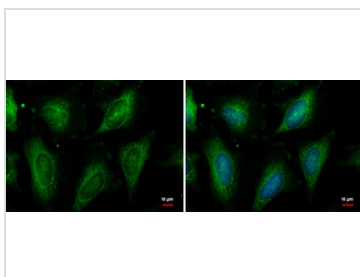
HSC70 antibody (GTX111069) dilution: 1:500.

Antigen Retrieval: Trilogy™ (EDTA based, pH 8.0) buffer, 15min


**GTX111069 IHC-P Image**

Immunohistochemical analysis of paraffin-embedded NCIN87 xenograft, using HSC70(GTX111069) antibody at 1:100 dilution.

Antigen Retrieval: Trilogy™ (EDTA based, pH 8.0) buffer, 15min


**GTX111069 ICC/IF Image**

HSC70 antibody detects HSC70 protein at cytoplasm by immunofluorescent analysis.

Sample: HeLa cells were fixed in ice-cold MeOH for 5 min.

Green: HSC70 protein stained by HSC70 antibody (GTX111069) diluted at 1:500.

Blue: Hoechst 33342 staining.



For full product information, images and publications, please visit our [website](https://www.genetex.com).