

Hsp70 antibody

Cat. No. GTX111088

Host	Rabbit
Clonality	Polyclonal
Isotype	IgG
Applications	WB, ICC/IF, IHC-P, IP
Reactivity	Human, Mouse, Rat, Monkey, Caenorhabditis elegans

References (11)

★★★★☆ Review (5)

Package

100 µl, 25 µl

Applications

Application Note

*Optimal dilutions/concentrations should be determined by the researcher.

Suggested dilution	Recommended dilution
WB	1:5000-1:20000
ICC/IF	1:100-1:1000
IHC-P	1:100-1:1000
IP	1:500-1:1000

Not tested in other applications.

Calculated MW 70 kDa. ([Note](#))

Product Note KO/KD validation is based on published data (PMID: 26863132).

Properties

Form	Liquid
Buffer	PBS, 20% Glycerol
Preservative	0.025% ProClin 300
Storage	Store as concentrated solution. Centrifuge briefly prior to opening vial. For short-term storage (1-2 weeks), store at 4°C. For long-term storage, aliquot and store at -20°C or below. Avoid multiple freeze-thaw cycles.
Concentration	0.62 mg/ml (Please refer to the vial label for the specific concentration.)
Immunogen	Recombinant protein encompassing a sequence within the center region of human Hsp70. The exact sequence is proprietary.
Purification	Purified by antigen-affinity chromatography.
Conjugation	Unconjugated

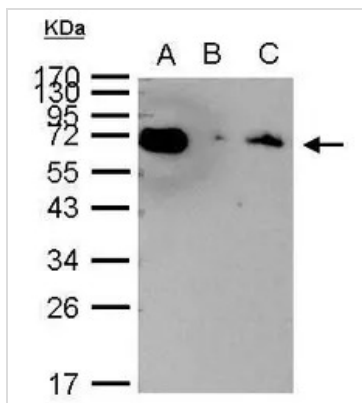


For full product information, images and publications, please visit our [website](#).

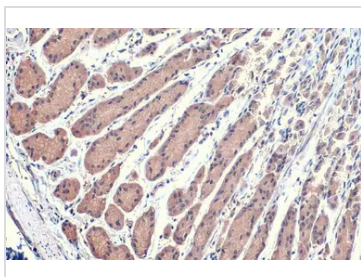
For laboratory research use only. Not for any clinical, therapeutic, or diagnostic use in humans or animals. Not for animal or human consumption.

Note

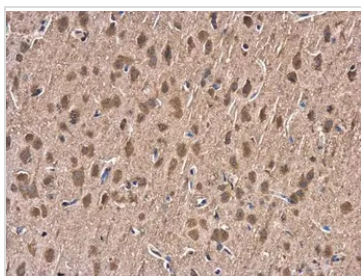
Purchasers shall not, and agree not to enable third parties to, analyze, copy, reverse engineer or otherwise attempt to determine the structure or sequence of the product.

DATA IMAGES

GTX111088 IP Image

Hsp70 antibody immunoprecipitates Hsp70 protein in IP experiments. IP Sample: 1000 µg HeLa whole cell lysate/extract A. 40 µg HeLa whole cell lysate/extract B. Control with 2.5 µg of preimmune rabbit IgG C. Immunoprecipitation of Hsp70 protein by 2.5 µg of Hsp70 antibody (GTX111088) 12% SDS-PAGE The immunoprecipitated Hsp70 protein was detected by Hsp70 antibody (GTX111088) diluted at 1:1000. EasyBlot anti-rabbit IgG (GTX221666-01) was used as a secondary reagent.


GTX111088 IHC-P Image

HSPA1A antibody detects HSPA1A protein at cytoplasm by immunohistochemical analysis. Sample: Paraffin-embedded human stomach. HSPA1A stained by HSPA1A antibody (GTX111088) diluted at 1:500. Antigen Retrieval: Citrate buffer, pH 6.0, 15 min


GTX111088 IHC-P Image

Hsp70 antibody detects Hsp70 protein at cytoplasm in rat brain by immunohistochemical analysis. Sample: Paraffin-embedded rat brain. Hsp70 antibody (GTX111088) diluted at 1:500. Antigen Retrieval: Citrate buffer, pH 6.0, 15 min



For full product information, images and publications, please visit our [website](https://www.genetex.com).