

# PLCB3 antibody

**Cat. No. GTX111100**

<b>Host</b>	Rabbit
<b>Clonality</b>	Polyclonal
<b>Isotype</b>	IgG
<b>Application</b>	WB
<b>Reactivity</b>	Human, Mouse, Rat

**Package**  
100 µl, 25 µl

## APPLICATION

### Application Note

\*Optimal dilutions/concentrations should be determined by the researcher.

Suggested dilution	Recommended dilution
WB	1:500-1:3000
Not tested in other applications.	

**Calculated MW** 139 kDa. ( [Note](#) )

## PROPERTIES

<b>Form</b>	Liquid
<b>Buffer</b>	PBS, 20% Glycerol
<b>Preservative</b>	0.01% Thimerosal
<b>Storage</b>	Store as concentrated solution. Centrifuge briefly prior to opening vial. For short-term storage (1-2 weeks), store at 4°C. For long-term storage, aliquot and store at -20°C or below. Avoid multiple freeze-thaw cycles.
<b>Concentration</b>	1 mg/ml (Please refer to the vial label for the specific concentration.)
<b>Immunogen</b>	Recombinant protein encompassing a sequence within the center region of human PLCB3. The exact sequence is proprietary.
<b>Purification</b>	Purified by antigen-affinity chromatography.
<b>Conjugation</b>	Unconjugated

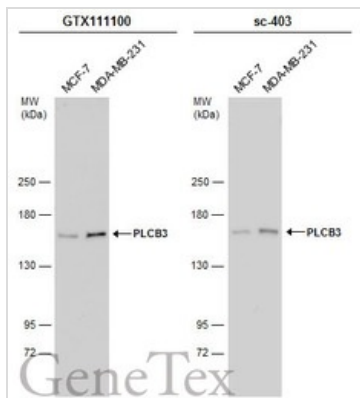
### Note

For laboratory research use only. Not for any clinical, therapeutic, or diagnostic use in humans or animals. Not for animal or human consumption.

Purchasers shall not, and agree not to enable third parties to, analyze, copy, reverse engineer or otherwise attempt to determine the structure or sequence of the product.

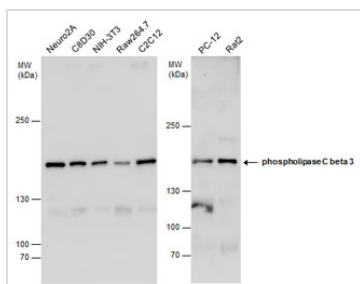


For full product information, images and publications, please visit our [website](#).

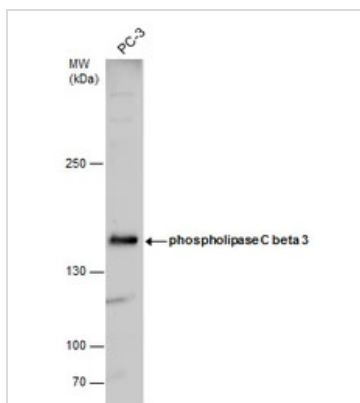
**DATA IMAGES**

**GTX111100 WB Image**

Various whole cell extracts (30 µg) were separated by 5% SDS-PAGE, and the membranes were blotted with PLCB3 antibody (GTX111100) diluted at 1:1000 and competitor's antibody (sc-403) diluted at 1:1000. The HRP-conjugated anti-rabbit IgG antibody (GTX213110-01) was used to detect the primary antibody.

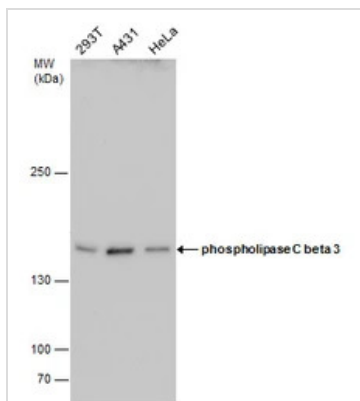
\*The competitor is not affiliated with GeneTex and does not endorse this product.


**GTX111100 WB Image**

phospholipase C beta 3 antibody detects phospholipase C beta 3 protein by western blot analysis. Various whole cell extracts of mouse and rat (30 µg) were separated by 5% SDS-PAGE, and the membrane was blotted with phospholipase C beta 3 antibody (GTX111100) diluted by 1:1000.


**GTX111100 WB Image**

phospholipase C beta 3 antibody detects phospholipase C beta 3 protein by western blot analysis. Whole cell extracts (30 µg) was separated by 5% SDS-PAGE, and the membrane was blotted with phospholipase C beta 3 antibody (GTX111100) diluted by 1:1000.


**GTX111100 WB Image**

phospholipase C beta 3 antibody detects phospholipase C beta 3 protein by western blot analysis. Various whole cell extracts (30 µg) were separated by 5% SDS-PAGE, and the membrane was blotted with phospholipase C beta 3 antibody (GTX111100) diluted by 1:1000.



For full product information, images and publications, please visit our [website](https://www.genetex.com).