

ATM antibody

Cat. No. GTX111106

Host	Rabbit
Clonality	Polyclonal
Isotype	IgG
Application	WB, ICC/IF, IHC-P
Reactivity	Human, Cat

Reference (1)
 Package
 100 µl, 25 µl

APPLICATION

Application Note

*Optimal dilutions/concentrations should be determined by the researcher.

Suggested dilution	Recommended dilution
WB	1:500-1:3000
ICC/IF	1:100-1:1000
IHC-P	Assay dependent

Not tested in other applications.

Calculated MW 351 kDa. ([Note](#))

PROPERTIES

Form	Liquid
Buffer	0.1M Tris, 0.1M Glycine, 20% Glycerol
Preservative	0.01% Thimerosal
Storage	Store as concentrated solution. Centrifuge briefly prior to opening vial. For short-term storage (1-2 weeks), store at 4°C. For long-term storage, aliquot and store at -20°C or below. Avoid multiple freeze-thaw cycles.
Concentration	0.93 mg/ml (Please refer to the vial label for the specific concentration.)
Immunogen	Recombinant protein encompassing a sequence within the center region of human ATM. The exact sequence is proprietary.
Purification	Purified by antigen-affinity chromatography.
Conjugation	Unconjugated

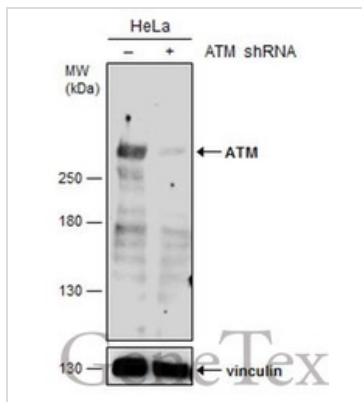
Note

For laboratory research use only. Not for any clinical, therapeutic, or diagnostic use in humans or animals. Not for animal or human consumption.

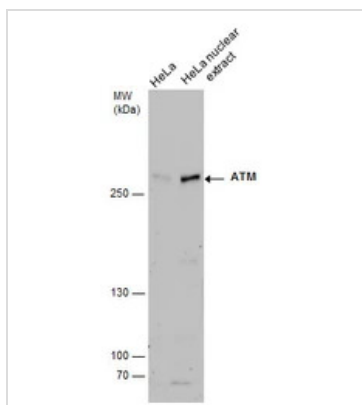
Purchasers shall not, and agree not to enable third parties to, analyze, copy, reverse engineer or otherwise attempt to determine the structure or sequence of the product.



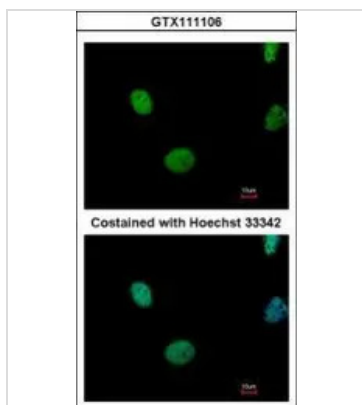
For full product information, images and publications, please visit our [website](#).

DATA IMAGES

GTX111106 WB Image

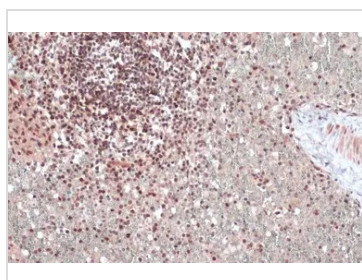
Non-transfected (–) and transfected (+) HeLa whole cell extracts (60 µg) were separated by 5% SDS-PAGE, and the membrane was blotted with ATM antibody (GTX111106) diluted at 1:500.


GTX111106 WB Image

ATM antibody detects ATM protein by western blot analysis. whole cell extracts and extracts (30 µg) were separated by 5% SDS-PAGE, and the membrane was blotted with ATM antibody (GTX111106) at a dilution of 1:500.


GTX111106 ICC/IF Image

Immunofluorescence analysis of paraformaldehyde-fixed HeLa, using ATM(GTX111106) antibody at 1:500 dilution.


GTX111106 IHC-P Image

ATM antibody detects ATM protein at nucleus by immunohistochemical analysis.

Sample: Paraffin-embedded cat spleen.

ATM stained by ATM antibody (GTX111106) diluted at 1:500.

Antigen Retrieval: Citrate buffer, pH 6.0, 15 min



For full product information, images and publications, please visit our [website](https://www.genetex.com).