

SMAD2 antibody

Cat. No. GTX111131

Host	Rabbit
Clonality	Polyclonal
Isotype	IgG
Applications	WB, ICC/IF, IP, ChIP assay
Reactivity	Human, Mouse

References (2)

Package

100 µl, 25 µl

Applications

Application Note

*Optimal dilutions/concentrations should be determined by the researcher.

Suggested dilution	Recommended dilution
WB	1:500-1:3000
ICC/IF	1:100-1:1000
IP	1:500-1:1000
ChIP assay	Assay dependent

Not tested in other applications.

Calculated MW	52 kDa. (Note)
Product Note	This antibody may recognize other Smad family members.

Properties

Form	Liquid
Buffer	0.1M Tris, 0.1M Glycine, 10% Glycerol
Preservative	0.01% Thimerosal
Storage	Store as concentrated solution. Centrifuge briefly prior to opening vial. For short-term storage (1-2 weeks), store at 4°C. For long-term storage, aliquot and store at -20°C or below. Avoid multiple freeze-thaw cycles.
Concentration	1 mg/ml (Please refer to the vial label for the specific concentration.)
Immunogen	Recombinant protein encompassing a sequence within the center region of human SMAD2. The exact sequence is proprietary.
Purification	Purified by antigen-affinity chromatography.
Conjugation	Unconjugated



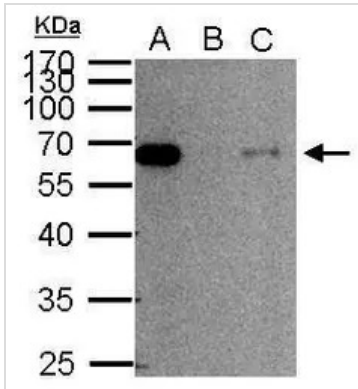
For full product information, images and publications, please visit our [website](#).

For laboratory research use only. Not for any clinical, therapeutic, or diagnostic use in humans or animals. Not for animal or human consumption.

Note

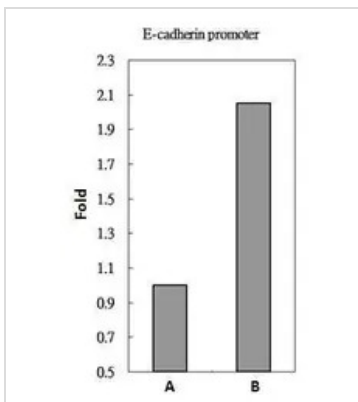
Purchasers shall not, and agree not to enable third parties to, analyze, copy, reverse engineer or otherwise attempt to determine the structure or sequence of the product.

DATA IMAGES



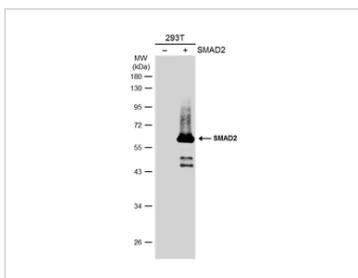
GTX111131 IP Image

SMAD2 antibody immunoprecipitates SMAD2 protein in IP experiments. IP Sample: 1000 µg HeLa whole cell lysate/extract A. 50 µg HeLa whole cell lysate/extract B. Control with 2 µg of preimmune rabbit IgG C. Immunoprecipitation of SMAD2 protein by 2 µg of SMAD2 antibody (GTX111131) 10% SDS-PAGE The immunoprecipitated SMAD2 protein was detected by SMAD2 antibody (GTX111131) diluted at 1:1000. EasyBlot anti-rabbit IgG (GTX221666-01) was used as a secondary reagent.



GTX111131 ChIP assay Image

SMAD2 antibody immunoprecipitates SMAD2 protein-DNA in ChIP experiments. ChIP Sample: HeLa whole cell lysate/extract A. 5 µg preimmune rabbit IgG B. 5 µg of SMAD2 antibody (GTX111131) The precipitated DNA was detected by PCR with primer set targeting to E-cadherin promoter.



GTX111131 WB Image

Non-transfected (-) and transfected (+) 293T whole cell extracts (30 µg) were separated by 10% SDS-PAGE, and the membrane was blotted with SMAD2 antibody (GTX111131) diluted at 1:1000. The HRP-conjugated anti-rabbit IgG antibody (GTX213110-01) was used to detect the primary antibody.



For full product information, images and publications, please visit our [website](https://www.genetex.com).