

GDNF Receptor alpha 1 antibody

Cat. No. GTX11115

Host	Rabbit
Clonality	Polyclonal
Isotype	IgG
Application	WB, IHC-P, ELISA
Reactivity	Human, Mouse, Rat

Package

50 µg

APPLICATION

Application Note

*Optimal dilutions/concentrations should be determined by the researcher.

Suggested dilution	Recommended dilution
WB	1 µg/mL
IHC-P	1 µg/mL
ELISA	Assay dependent

Not tested in other applications.

Calculated MW	51 kDa. (Note)
Product Note	GFR alpha 1 antibody is predicted to not cross-react with other members of the GFR alpha family of proteins.

PROPERTIES

Form	Liquid
Buffer	PBS
Preservative	0.02% Sodium azide
Storage	Store as concentrated solution. Centrifuge briefly prior to opening vial. For short-term storage (1-2 weeks), store at 4°C. For long-term storage, aliquot and store at -20°C or below. Avoid multiple freeze-thaw cycles.
Concentration	1 mg/ml (Please refer to the vial label for the specific concentration.)
Immunogen	GFR alpha 1 antibody was raised against a 14 amino acid peptide near the center of human GFR alpha 1. The immunogen is located within amino acids 360 - 410 of GFR alpha 1.
Purification	Purified by antigen-affinity chromatography
Conjugation	Unconjugated



For full product information, images and publications, please visit our [website](#).

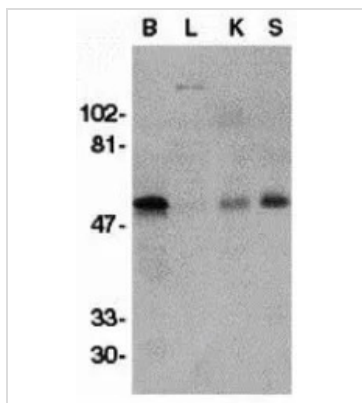
Date 2024 / 05 / 17 Page 1 of 2

For laboratory research use only. Not for any clinical, therapeutic, or diagnostic use in humans or animals. Not for animal or human consumption.

Note

Purchasers shall not, and agree not to enable third parties to, analyze, copy, reverse engineer or otherwise attempt to determine the structure or sequence of the product.

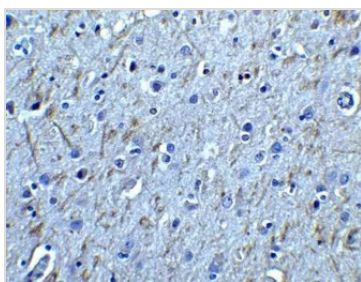
DATA IMAGES



GTX11115 WB Image

WB analysis of crude membrane fractions of human brain (B), liver (L), kidney (K), and spleen (S) using GTX11115 GDNF Receptor alpha 1 antibody.

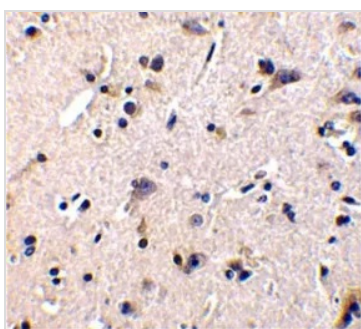
Working concentration : 1 µg/ml



GTX11115 IHC-P Image

IHC-P analysis of human brain tissue using GTX11115 GDNF Receptor alpha 1 antibody.

Working concentration : 2.5 µg/ml



GTX11115 IHC-P Image

IHC-P analysis of human brain tissue using GTX11115 GDNF Receptor alpha 1 antibody.

Working concentration : 1 µg/ml



For full product information, images and publications, please visit our [website](https://www.genetex.com).