

MX1 antibody

Cat. No. GTX111153

Host	Rabbit
Clonality	Polyclonal
Isotype	IgG
Applications	WB, IHC-P
Reactivity	Human

References (2)

Package

100 µl, 25 µl

Applications

Application Note

*Optimal dilutions/concentrations should be determined by the researcher.

Suggested dilution	Recommended dilution
WB	1:500-1:10000
IHC-P	1:100-1:1000

Not tested in other applications.

Calculated MW 76 kDa. ([Note](#))

Properties

Form	Liquid
Buffer	PBS, 1% BSA, 20% Glycerol
Preservative	0.025% ProClin 300
Storage	Store as concentrated solution. Centrifuge briefly prior to opening vial. For short-term storage (1-2 weeks), store at 4°C. For long-term storage, aliquot and store at -20°C or below. Avoid multiple freeze-thaw cycles.
Concentration	0.06 mg/ml (Please refer to the vial label for the specific concentration.)
Immunogen	Recombinant protein encompassing a sequence within the center region of human MX1. The exact sequence is proprietary.
Purification	Purified by antigen-affinity chromatography.
Conjugation	Unconjugated

Note

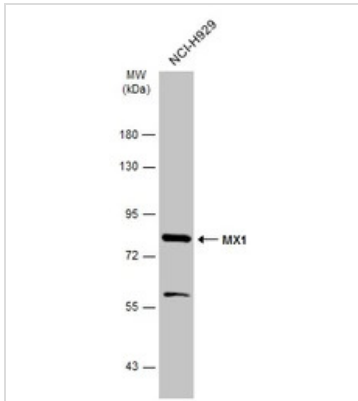
For laboratory research use only. Not for any clinical, therapeutic, or diagnostic use in humans or animals. Not for animal or human consumption.

Purchasers shall not, and agree not to enable third parties to, analyze, copy, reverse engineer or otherwise attempt to determine the structure or sequence of the product.



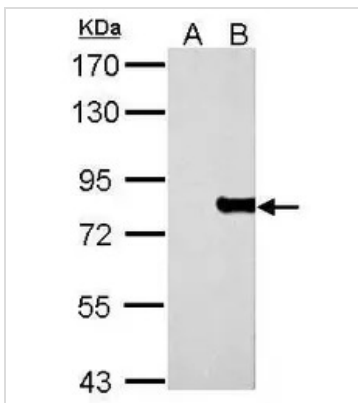
For full product information, images and publications, please visit our [website](#).

DATA IMAGES



GTx111153 WB Image

Whole cell extract (30 µg) was separated by 7.5% SDS-PAGE, and the membrane was blotted with MX1 antibody (GTx111153) diluted at 1:1000. The HRP-conjugated anti-rabbit IgG antibody (GTx213110-01) was used to detect the primary antibody.



GTx111153 WB Image

MX1 antibody detects MX1 protein by western blot analysis.

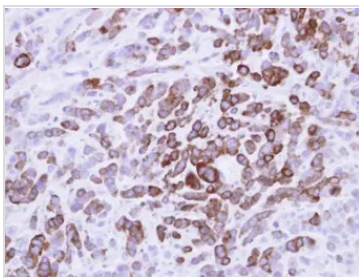
A. 30 µg 293T whole cell lysate/extract

B. 30 µg whole cell lysate/extract of human MX1-transfected 293T cells

7.5% SDS-PAGE

MX1 antibody (GTx111153) dilution: 1:5000

The HRP-conjugated anti-rabbit IgG antibody (GTx213110-01) was used to detect the primary antibody.



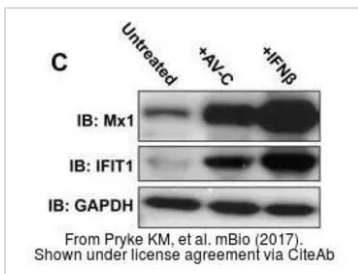
GTx111153 IHC-P Image

MX1 Antibody detects MX1 protein at cytosol on MDA-MB-468 xenograft by immunohistochemical analysis.

Sample: Paraffin-embedded MDA-MB-468 xenograft.

MX1 Antibody (GTx111153) dilution: 1:500.

Antigen Retrieval: Trilogy™ (EDTA based, pH 8.0) buffer, 15min



GTx111153 WB Image

The data was published in the journal mBio in 2017. [PMID: 28465426](https://pubmed.ncbi.nlm.nih.gov/28465426/)



For full product information, images and publications, please visit our [website](https://www.genetex.com).