

Dishevelled 2 antibody [N1N3]

Cat. No. GTX111156

Host	Rabbit
Clonality	Polyclonal
Isotype	IgG
Applications	WB, ICC/IF
Reactivity	Human, Mouse, Rat

References (3)

Package

100 µl, 25 µl

Applications

Application Note

*Optimal dilutions/concentrations should be determined by the researcher.

Suggested dilution	Recommended dilution
WB	1:1000-1:20000
ICC/IF	1:100-1:1000

Not tested in other applications.

Calculated MW 79 kDa. ([Note](#))

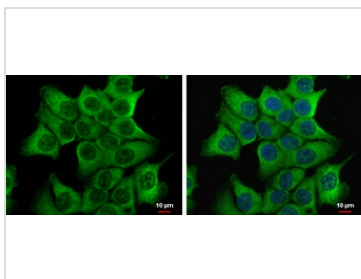
Properties

Form	Liquid
Buffer	0.1M Tris, 0.1M Glycine, 10% Glycerol
Preservative	0.01% Thimerosal
Storage	Store as concentrated solution. Centrifuge briefly prior to opening vial. For short-term storage (1-2 weeks), store at 4°C. For long-term storage, aliquot and store at -20°C or below. Avoid multiple freeze-thaw cycles.
Concentration	1 mg/ml (Please refer to the vial label for the specific concentration.)
Immunogen	Recombinant protein encompassing a sequence within the center region of human Dishevelled 2. The exact sequence is proprietary.
Purification	Purified by antigen-affinity chromatography.
Conjugation	Unconjugated
Note	For laboratory research use only. Not for any clinical, therapeutic, or diagnostic use in humans or animals. Not for animal or human consumption. Purchasers shall not, and agree not to enable third parties to, analyze, copy, reverse engineer or otherwise attempt to determine the structure or sequence of the product.



For full product information, images and publications, please visit our [website](#).

DATA IMAGES

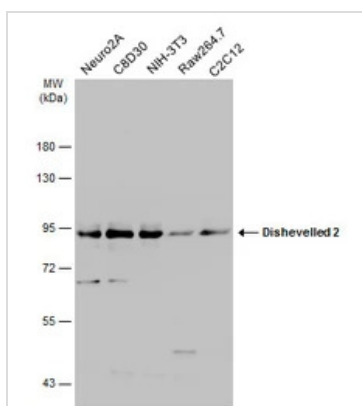
**GTX111156 ICC/IF Image**

Dvl-2 antibody [N1N3] detects Dvl-2 protein at cytoplasm by immunofluorescent analysis.

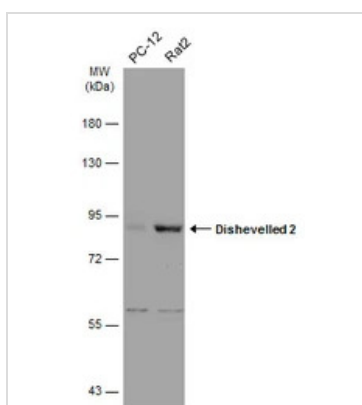
Sample: HCT 116 cells were fixed in 4% paraformaldehyde at RT for 15 min.

Green: Dvl-2 protein stained by Dvl-2 antibody [N1N3] (GTX111156) diluted at 1:500.

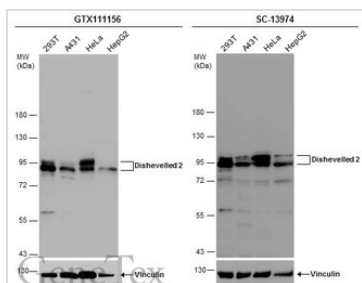
Blue: Hoechst 33342 staining.

**GTX111156 WB Image**

Various whole cell extracts (30 μg) were separated by 7.5% SDS-PAGE, and the membrane was blotted with Dishevelled 2 antibody [N1N3] (GTX111156) diluted at 1:5000. The HRP-conjugated anti-rabbit IgG antibody (GTX213110-01) was used to detect the primary antibody.

**GTX111156 WB Image**

Various whole cell extracts (30 μg) were separated by 7.5% SDS-PAGE, and the membrane was blotted with Dishevelled 2 antibody [N1N3] (GTX111156) diluted at 1:5000. The HRP-conjugated anti-rabbit IgG antibody (GTX213110-01) was used to detect the primary antibody.

**GTX111156 WB Image**

Various whole cell extracts (30 μg) were separated by 7.5% SDS-PAGE, and the membranes were blotted with Dishevelled 2 antibody [N1N3] (GTX111156) diluted at 1:5000 and competitor's antibody (SC-13974) diluted by 1:200.

*The competitor is not affiliated with GeneTex and does not endorse this product.



For full product information, images and publications, please visit our [website](#).