

alpha Actinin 2 antibody [N2C1], Internal

Cat. No. GTX111167

Host	Rabbit
Clonality	Polyclonal
Isotype	IgG
Applications	WB, ICC/IF, IHC-P
Reactivity	Human, Mouse, Rat, Zebrafish

Package
100 µl, 25 µl

Applications

Application Note

*Optimal dilutions/concentrations should be determined by the researcher.

Suggested dilution	Recommended dilution
WB	1:500-1:10000
ICC/IF	1:100-1:1000
IHC-P	1:100-1:1000

Not tested in other applications.

Calculated MW 104 kDa. ([Note](#))

Product Note Based on sequence homology, this antibody may cross react with ACTN1 protein.

Properties

Form	Liquid
Buffer	0.1M Tris, 0.1M Glycine, 10% Glycerol
Preservative	0.01% Thimerosal
Storage	Store as concentrated solution. Centrifuge briefly prior to opening vial. For short-term storage (1-2 weeks), store at 4°C. For long-term storage, aliquot and store at -20°C or below. Avoid multiple freeze-thaw cycles.
Concentration	1 mg/ml (Please refer to the vial label for the specific concentration.)
Immunogen	Recombinant protein encompassing a sequence within the center region of human alpha Actinin 2. The exact sequence is proprietary.
Purification	Purified by antigen-affinity chromatography.
Conjugation	Unconjugated



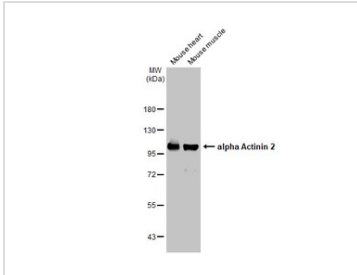
For full product information, images and publications, please visit our [website](#).

Date 2026 / 01 / 23 Page 1 of 2

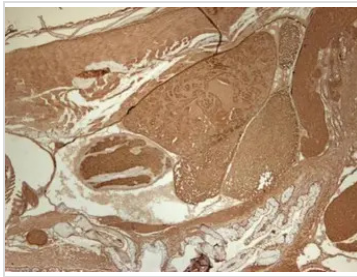
For laboratory research use only. Not for any clinical, therapeutic, or diagnostic use in humans or animals. Not for animal or human consumption.

Note

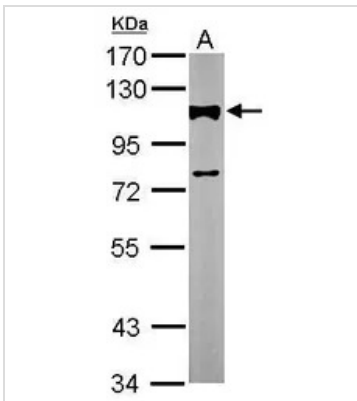
Purchasers shall not, and agree not to enable third parties to, analyze, copy, reverse engineer or otherwise attempt to determine the structure or sequence of the product.

DATA IMAGES

GTx111167 WB Image

Mouse tissue extract (50 µg) were separated by 7.5% SDS-PAGE, and the membrane was blotted with alpha Actinin 2 antibody [N2C1], Internal (GTx111167) diluted at 1:1000. The HRP-conjugated anti-rabbit IgG antibody (GTx213110-01) was used to detect the primary antibody.


GTx111167 IHC-P Image

Immunohistochemical analysis of paraffin-embedded zebrafish tissue, using alpha Actinin 2 antibody [N2C1], Internal (GTx111167) at 1:300 dilution.


GTx111167 WB Image

Sample (10 µg of whole cell lysate)
A: adult zebrafish
7.5% SDS PAGE
GTx111167 diluted at 1:3000



For full product information, images and publications, please visit our [website](https://www.genetex.com).