

TCR gamma + delta antibody [GL3]

Cat. No. GTX11120

Host	Armenian Hamster
Clonality	Monoclonal
Isotype	IgG
Applications	IHC-Fr, FCM
Reactivity	Mouse

Package
125 µg

Applications

Application Note

*Optimal dilutions/concentrations should be determined by the researcher.

Suggested dilution	Recommended dilution
IHC-Fr	Assay dependent
FCM	Assay dependent

Not tested in other applications.

Product Note

GTX11120 reacts with mouse TCR gamma/delta expressing lymphocytes. Clone GL3 has been shown to have depleting activity in vivo, Van der Heyde, H. C. et al, Skeen, M. J. and Ziegler, H.K.

Properties

Form	Liquid
Buffer	PBS
Preservative	0.02% Sodium azide
Storage	Store as concentrated solution. Centrifuge briefly prior to opening vial. For short-term storage (1-2 weeks), store at 4°C. For long-term storage, aliquot and store at -20°C or below. Avoid multiple freeze-thaw cycles.
Concentration	1.0 mg/ml (Please refer to the vial label for the specific concentration.)
Immunogen	C57BL/6J intra epithelial lymphocytes
Purification	Protein G affinity purified
Conjugation	Unconjugated

Note

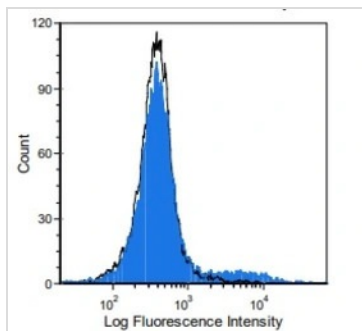
For laboratory research use only. Not for any clinical, therapeutic, or diagnostic use in humans or animals. Not for animal or human consumption.

Purchasers shall not, and agree not to enable third parties to, analyze, copy, reverse engineer or otherwise attempt to determine the structure or sequence of the product.



For full product information, images and publications, please visit our [website](#).

DATA IMAGES



GTX11120 FCM Image

FACS analysis of C3H/He mouse splenic T-cells using GTX11120 TCR gamma + delta antibody.

Filled histogram : Primary antibody

Open histogram : Armenian hamster IgG isotype control



For full product information, images and publications, please visit our [website](https://www.genetex.com).