

## CtBP1 antibody [N2C2], Internal

Cat. No. GTX111229

<b>Host</b>	Rabbit
<b>Clonality</b>	Polyclonal
<b>Isotype</b>	IgG
<b>Applications</b>	WB, ICC/IF, IHC-Wm
<b>Reactivity</b>	Human, Mouse, Zebrafish

**Package**  
100 µl, 25 µl

## Applications

## Application Note

\*Optimal dilutions/concentrations should be determined by the researcher.

Suggested dilution	Recommended dilution
WB	1:500-1:3000
ICC/IF	1:100-1:1000
IHC-Wm	Assay dependent

Not tested in other applications.

**Calculated MW** 48 kDa. ( [Note](#) )

## Properties

<b>Form</b>	Liquid
<b>Buffer</b>	0.1M Tris, 0.1M Glycine, 10% Glycerol
<b>Preservative</b>	0.01% Thimerosal
<b>Storage</b>	Store as concentrated solution. Centrifuge briefly prior to opening vial. For short-term storage (1-2 weeks), store at 4°C. For long-term storage, aliquot and store at -20°C or below. Avoid multiple freeze-thaw cycles.
<b>Concentration</b>	0.69 mg/ml (Please refer to the vial label for the specific concentration.)
<b>Immunogen</b>	Recombinant protein encompassing a sequence within the center region of human CtBP1. The exact sequence is proprietary.
<b>Purification</b>	Purified by antigen-affinity chromatography.
<b>Conjugation</b>	Unconjugated

## Note

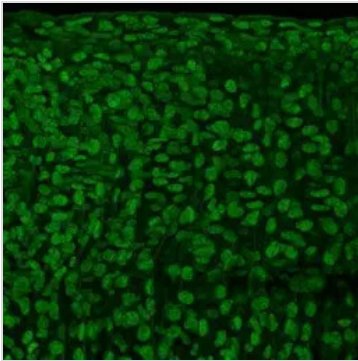
For laboratory research use only. Not for any clinical, therapeutic, or diagnostic use in humans or animals. Not for animal or human consumption.

Purchasers shall not, and agree not to enable third parties to, analyze, copy, reverse engineer or otherwise attempt to determine the structure or sequence of the product.



For full product information, images and publications, please visit our [website](#).

## DATA IMAGES

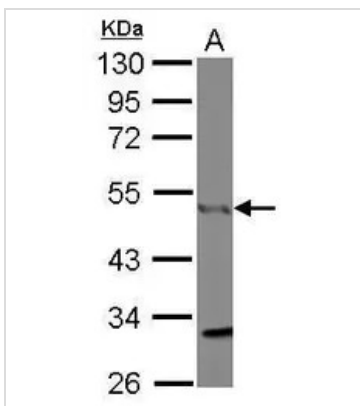


### GTx111229 IHC-Wm Image

Zgc:136929 antibody detects Zgc:136929 protein at nucleus on whole-mount zebrafish embryos by immunohistochemical analysis.

Sample: Paraformaldehyde-fixed zebrafish embryos.

Zgc:136929 antibody (GTx111229) dilution: 1:200.



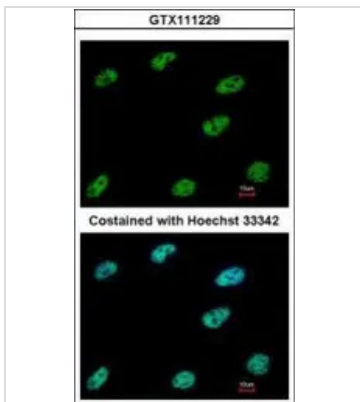
### GTx111229 WB Image

Sample (50 ug of whole cell lysate)

A: Mouse brain

10% SDS PAGE

GTx111229 diluted at 1:1000



### GTx111229 ICC/IF Image

Immunofluorescence analysis of paraformaldehyde-fixed HeLa, using CtBP1(GTx111229) antibody at 1:500 dilution.



For full product information, images and publications, please visit our [website](https://www.genetex.com).