

PKM antibody

Cat. No. GTX111319

Host	Rabbit
Clonality	Polyclonal
Isotype	IgG
Application	WB, IHC-P
Reactivity	Human, Mouse, Rat

★★★★★ Review (1)

Package
100 µl, 25 µl

APPLICATION

Application Note

*Optimal dilutions/concentrations should be determined by the researcher.

Suggested dilution	Recommended dilution
WB	1:500-1:3000
IHC-P	1:100-1:1000

Not tested in other applications.

Calculated MW 58 kDa. ([Note](#))

PROPERTIES

Form	Liquid
Buffer	0.1M Tris, 0.1M Glycine, 10% Glycerol
Preservative	0.01% Thimerosal
Storage	Store as concentrated solution. Centrifuge briefly prior to opening vial. For short-term storage (1-2 weeks), store at 4°C. For long-term storage, aliquot and store at -20°C or below. Avoid multiple freeze-thaw cycles.
Concentration	0.48 mg/ml (Please refer to the vial label for the specific concentration.)
Immunogen	Recombinant protein encompassing a sequence within the center region of human PKM. The exact sequence is proprietary.
Purification	Purified by antigen-affinity chromatography.
Conjugation	Unconjugated

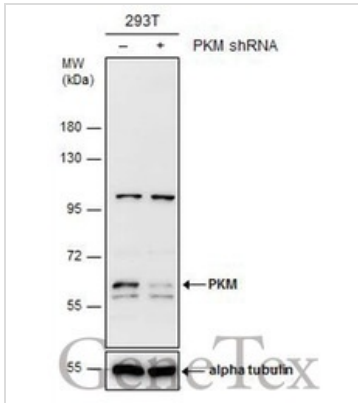
Note

For laboratory research use only. Not for any clinical, therapeutic, or diagnostic use in humans or animals. Not for animal or human consumption.

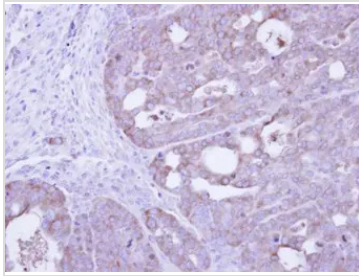
Purchasers shall not, and agree not to enable third parties to, analyze, copy, reverse engineer or otherwise attempt to determine the structure or sequence of the product.



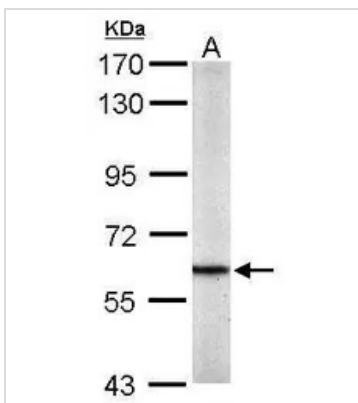
For full product information, images and publications, please visit our [website](#).

DATA IMAGES

GTXT111319 WB Image

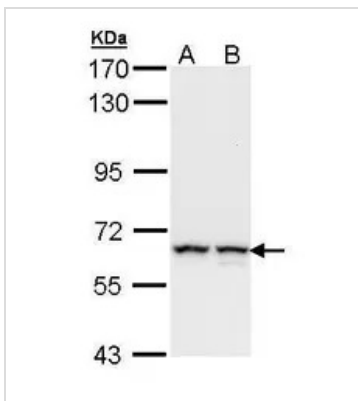
Non-transfected (-) and transfected (+) 293T whole cell extracts (30 µg) were separated by 7.5% SDS-PAGE, and the membrane was blotted with PKM antibody (GTXT111319) diluted at 1:500.


GTXT111319 IHC-P Image

Immunohistochemical analysis of paraffin-embedded NCIN87 xenograft, using Pyruvate Kinase(muscle) (GTXT111319) antibody at 1:100 dilution.


GTXT111319 WB Image

Sample (50 ug of whole cell lysate)
A: Mouse brain
7.5% SDS PAGE
GTXT111319 diluted at 1:1000


GTXT111319 WB Image

Sample (30 ug of whole cell lysate)
A: A431 (GTXT27909)
B: H1299
7.5% SDS PAGE
GTXT111319 diluted at 1:1000



For full product information, images and publications, please visit our [website](https://www.genetex.com).