

MVD antibody

Cat. No. GTX111324

| | |
|--------------|-------------------|
| Host | Rabbit |
| Clonality | Polyclonal |
| Isotype | IgG |
| Applications | WB, ICC/IF, IHC-P |
| Reactivity | Human, Mouse |

Package
100 µl, 25 µl

Applications

Application Note

*Optimal dilutions/concentrations should be determined by the researcher.

| Suggested dilution | Recommended dilution |
|--------------------|----------------------|
| WB | 1:500-1:3000 |
| ICC/IF | 1:100-1:1000 |
| IHC-P | 1:100-1:1000 |

Not tested in other applications.

Calculated MW 43 kDa. ([Note](#))

Properties

| | |
|---------------|--|
| Form | Liquid |
| Buffer | 0.1M Tris, 0.1M Glycine, 10% Glycerol |
| Preservative | 0.01% Thimerosal |
| Storage | Store as concentrated solution. Centrifuge briefly prior to opening vial. For short-term storage (1-2 weeks), store at 4°C. For long-term storage, aliquot and store at -20°C or below. Avoid multiple freeze-thaw cycles. |
| Concentration | 1 mg/ml (Please refer to the vial label for the specific concentration.) |
| Immunogen | Recombinant protein encompassing a sequence within the center region of human MVD. The exact sequence is proprietary. |
| Purification | Purified by antigen-affinity chromatography. |
| Conjugation | Unconjugated |

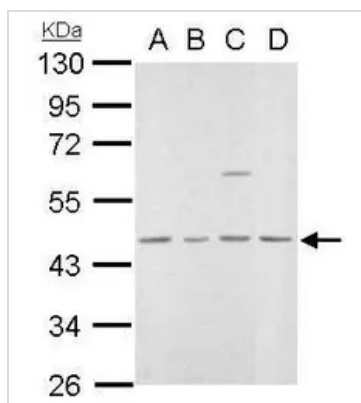
Note

For laboratory research use only. Not for any clinical, therapeutic, or diagnostic use in humans or animals. Not for animal or human consumption.

Purchasers shall not, and agree not to enable third parties to, analyze, copy, reverse engineer or otherwise attempt to determine the structure or sequence of the product.



For full product information, images and publications, please visit our [website](#).

DATA IMAGES

GTx111324 WB Image

MVD antibody detects MVD protein by Western blot analysis.

A. 30 µg 293T whole lysate/extract

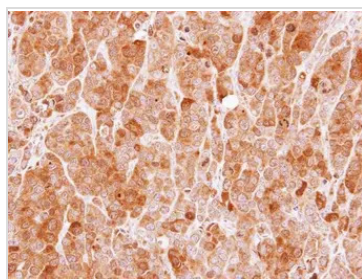
B. 30 µg A431 whole cell lysate/extract

C. 30 µg HeLa whole cell lysate/extract

D. 30 µg A375 whole cell lysate/extract

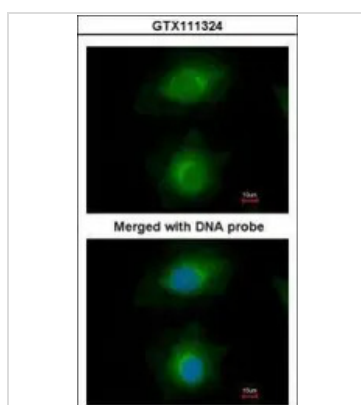
10 % SDS-PAGE

MVD antibody (GTx111324) dilution: 1:1000

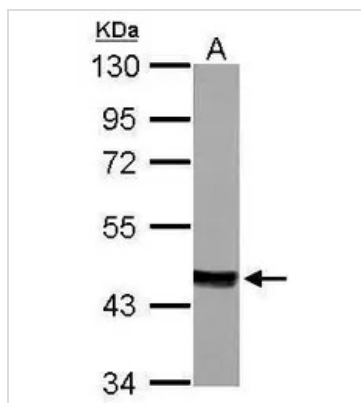

GTx111324 IHC-P Image

Immunohistochemical analysis of paraffin-embedded MCF7 xenograft, using MVD(GTx111324) antibody at 1:100 dilution.

Antigen Retrieval: Trilogy™ (EDTA based, pH 8.0) buffer, 15min


GTx111324 ICC/IF Image

Immunofluorescence analysis of paraformaldehyde-fixed HeLa, using MVD(GTx111324) antibody at 1:200 dilution.


GTx111324 WB Image

Sample (50 ug of whole cell lysate)

A: mouse Liver

10% SDS PAGE

GTx111324 diluted at 1:1000



For full product information, images and publications, please visit our [website](http://www.genetex.com).