

IKK epsilon antibody [C2C3], C-term

Cat. No. GTX111350

Host	Rabbit
Clonality	Polyclonal
Isotype	IgG
Applications	WB, ICC/IF, IHC-P
Reactivity	Human

Package
100 µl, 25 µl

Applications

Application Note

*Optimal dilutions/concentrations should be determined by the researcher.

Suggested dilution	Recommended dilution
WB	1:500-1:3000
ICC/IF	1:100-1:1000
IHC-P	1:100-1:1000

Not tested in other applications.

Calculated MW 80 kDa. ([Note](#))

Properties

Form	Liquid
Buffer	0.1M Tris, 0.1M Glycine, 10% Glycerol
Preservative	0.01% Thimerosal
Storage	Store as concentrated solution. Centrifuge briefly prior to opening vial. For short-term storage (1-2 weeks), store at 4°C. For long-term storage, aliquot and store at -20°C or below. Avoid multiple freeze-thaw cycles.
Concentration	1 mg/ml (Please refer to the vial label for the specific concentration.)
Immunogen	Recombinant protein encompassing a sequence within the C-terminus region of human IKK epsilon. The exact sequence is proprietary.
Purification	Purified by antigen-affinity chromatography.
Conjugation	Unconjugated

Note

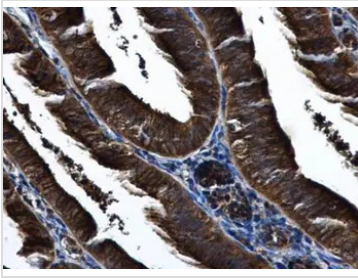
For laboratory research use only. Not for any clinical, therapeutic, or diagnostic use in humans or animals. Not for animal or human consumption.

Purchasers shall not, and agree not to enable third parties to, analyze, copy, reverse engineer or otherwise attempt to determine the structure or sequence of the product.



For full product information, images and publications, please visit our [website](#).

DATA IMAGES



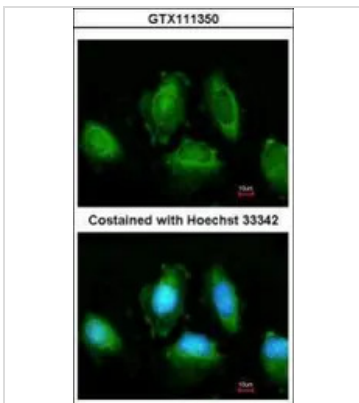
GTX111350 IHC-P Image

IKBKE antibody [C2C3], C-term detects IKBKE protein at cytoplasm in human endometrium by immunohistochemical analysis.

Sample: Paraffin-embedded human endometrium.

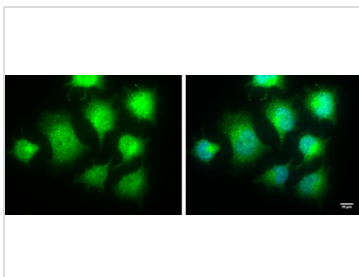
IKBKE antibody [C2C3], C-term (GTX111350) diluted at 1:500.

Antigen Retrieval: Citrate buffer, pH 6.0, 15 min



GTX111350 ICC/IF Image

Immunofluorescence analysis of methanol-fixed HeLa, using IKBKE(GTX111350) antibody at 1:200 dilution.



GTX111350 ICC/IF Image

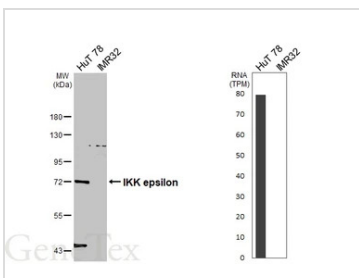
IKBKE antibody [C2C3], C-term detects IKBKE protein at cytoplasm and nucleus by immunofluorescent analysis.

Sample: HeLa cells were fixed in 4% paraformaldehyde for 10 min.

Green: IKBKE protein stained by IKBKE antibody [C2C3], C-term (GTX111350) diluted at 1:100.

Blue: Hoechst 33342 staining.

Scale bar = 10 μ m.



GTX111350 WB Image

Various whole cell extracts (30 μ g) were separated by 7.5% SDS-PAGE, and the membrane was blotted with IKK epsilon antibody [C2C3], C-term (GTX111350) diluted at 1:1000. The HRP-conjugated anti-rabbit IgG antibody (GTX213110-01) was used to detect the primary antibody, and the signal was developed with Trident femto Western HRP Substrate. Corresponding RNA expression data are based on Human Protein Atlas program.



For full product information, images and publications, please visit our [website](https://www.genetex.com).