

CaMKII delta antibody

Cat. No. GTX111401

Host	Rabbit
Clonality	Polyclonal
Isotype	IgG
Applications	WB, ICC/IF, IHC-P, IP
Reactivity	Human, Mouse, Rat, Zebrafish, Rabbit

References (28)

★★★★★ Review (1)

Package

100 µl, 25 µl

Applications

Application Note

*Optimal dilutions/concentrations should be determined by the researcher.

Suggested dilution	Recommended dilution
WB	1:500-1:50000
ICC/IF	1:100-1:1000
IHC-P	1:100-1:1000
IP	1:100-1:500

Not tested in other applications.

Calculated MW 56 kDa. ([Note](#))**Product Note** Cross-reactivity may occur with other CaM kinase II subunits. KO/KD validation is based on published data (PMID: 30962442).

Properties

Form	Liquid
Buffer	PBS, 20% Glycerol
Preservative	0.025% ProClin 300
Storage	Store as concentrated solution. Centrifuge briefly prior to opening vial. For short-term storage (1-2 weeks), store at 4°C. For long-term storage, aliquot and store at -20°C or below. Avoid multiple freeze-thaw cycles.
Concentration	0.66 mg/ml (Please refer to the vial label for the specific concentration.)
Immunogen	Recombinant protein encompassing a sequence within the center region of human CaMKII delta. The exact sequence is proprietary.
Purification	Purified by antigen-affinity chromatography.
Conjugation	Unconjugated

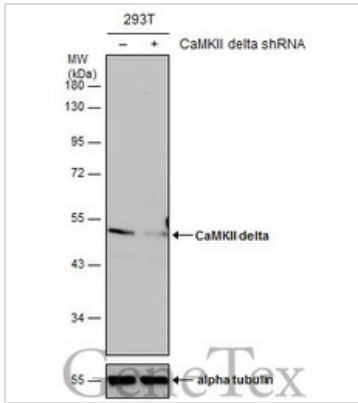
For full product information, images and publications, please visit our [website](#).

For laboratory research use only. Not for any clinical, therapeutic, or diagnostic use in humans or animals. Not for animal or human consumption.

Note

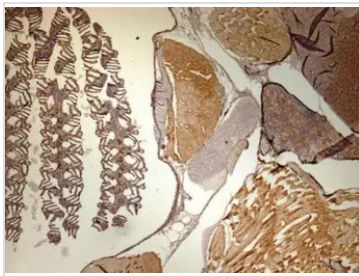
Purchasers shall not, and agree not to enable third parties to, analyze, copy, reverse engineer or otherwise attempt to determine the structure or sequence of the product.

DATA IMAGES



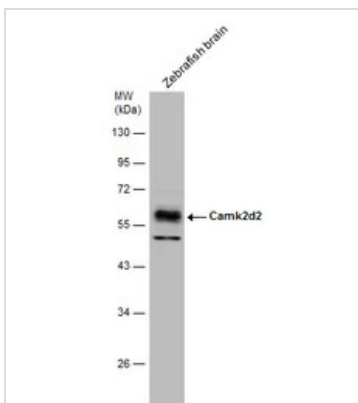
GTX111401 WB Image

Non-transfected (-) and transfected (+) 293T whole cell extracts (50 µg) were separated by 10% SDS-PAGE, and the membrane was blotted with CaMKII delta antibody (GTX111401) diluted at 1:10000. The HRP-conjugated anti-rabbit IgG antibody (GTX213110-01) was used to detect the primary antibody.



GTX111401 IHC-P Image

Immunohistochemical analysis of paraffin-embedded zebrafish tissue, using CaMKII delta antibody (GTX111401) at 1:300 dilution.



GTX111401 WB Image

Zebrafish tissue extract (30 µg) was separated by 10% SDS-PAGE, and the membrane was blotted with CaMKII delta antibody (GTX111401) diluted at 1:40000.



For full product information, images and publications, please visit our [website](https://www.genetex.com).