

## CaMKII delta antibody

Cat. No. GTX111401

Host	Rabbit
Clonality	Polyclonal
Isotype	IgG
Applications	WB, ICC/IF, IHC-P, IP
Reactivity	Human, Mouse, Rat, Zebrafish, Rabbit

References ( 28 )

★★★★★ Review ( 1 )

Package

100 µl, 25 µl

## Applications

## Application Note

\*Optimal dilutions/concentrations should be determined by the researcher.

Suggested dilution	Recommended dilution
WB	1:500-1:50000
ICC/IF	1:100-1:1000
IHC-P	1:100-1:1000
IP	1:100-1:500

Not tested in other applications.

**Calculated MW** 56 kDa. ( [Note](#) )

**Product Note** Cross-reactivity may occur with other CaM kinase II subunits.  
KO/KD validation is based on published data (PMID: 30962442).

## Properties

Form	Liquid
Buffer	PBS, 20% Glycerol
Preservative	0.025% ProClin 300
Storage	Store as concentrated solution. Centrifuge briefly prior to opening vial. For short-term storage (1-2 weeks), store at 4°C. For long-term storage, aliquot and store at -20°C or below. Avoid multiple freeze-thaw cycles.
Concentration	0.66 mg/ml (Please refer to the vial label for the specific concentration.)
Immunogen	Recombinant protein encompassing a sequence within the center region of human CaMKII delta. The exact sequence is proprietary.
Purification	Purified by antigen-affinity chromatography.
Conjugation	Unconjugated



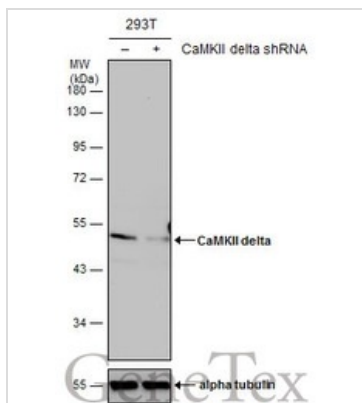
For full product information, images and publications, please visit our [website](#).

For laboratory research use only. Not for any clinical, therapeutic, or diagnostic use in humans or animals. Not for animal or human consumption.

## Note

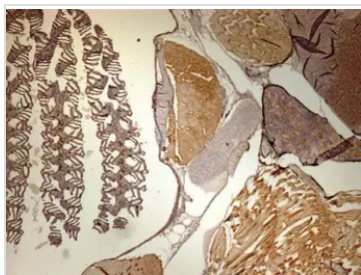
Purchasers shall not, and agree not to enable third parties to, analyze, copy, reverse engineer or otherwise attempt to determine the structure or sequence of the product.

## DATA IMAGES



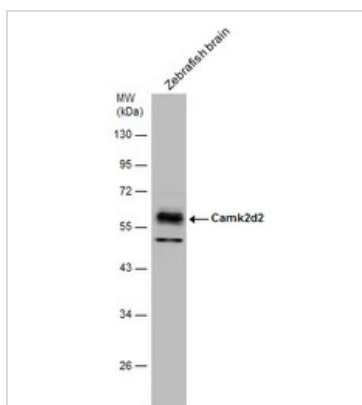
### GTX111401 WB Image

Non-transfected (-) and transfected (+) 293T whole cell extracts (50 µg) were separated by 10% SDS-PAGE, and the membrane was blotted with CaMKII delta antibody (GTX111401) diluted at 1:10000. The HRP-conjugated anti-rabbit IgG antibody (GTX213110-01) was used to detect the primary antibody.



### GTX111401 IHC-P Image

Immunohistochemical analysis of paraffin-embedded zebrafish tissue, using CaMKII delta antibody (GTX111401) at 1:300 dilution.



### GTX111401 WB Image

Zebrafish tissue extract (30 µg) was separated by 10% SDS-PAGE, and the membrane was blotted with CaMKII delta antibody (GTX111401) diluted at 1:40000.



For full product information, images and publications, please visit our [website](https://www.genetex.com).